

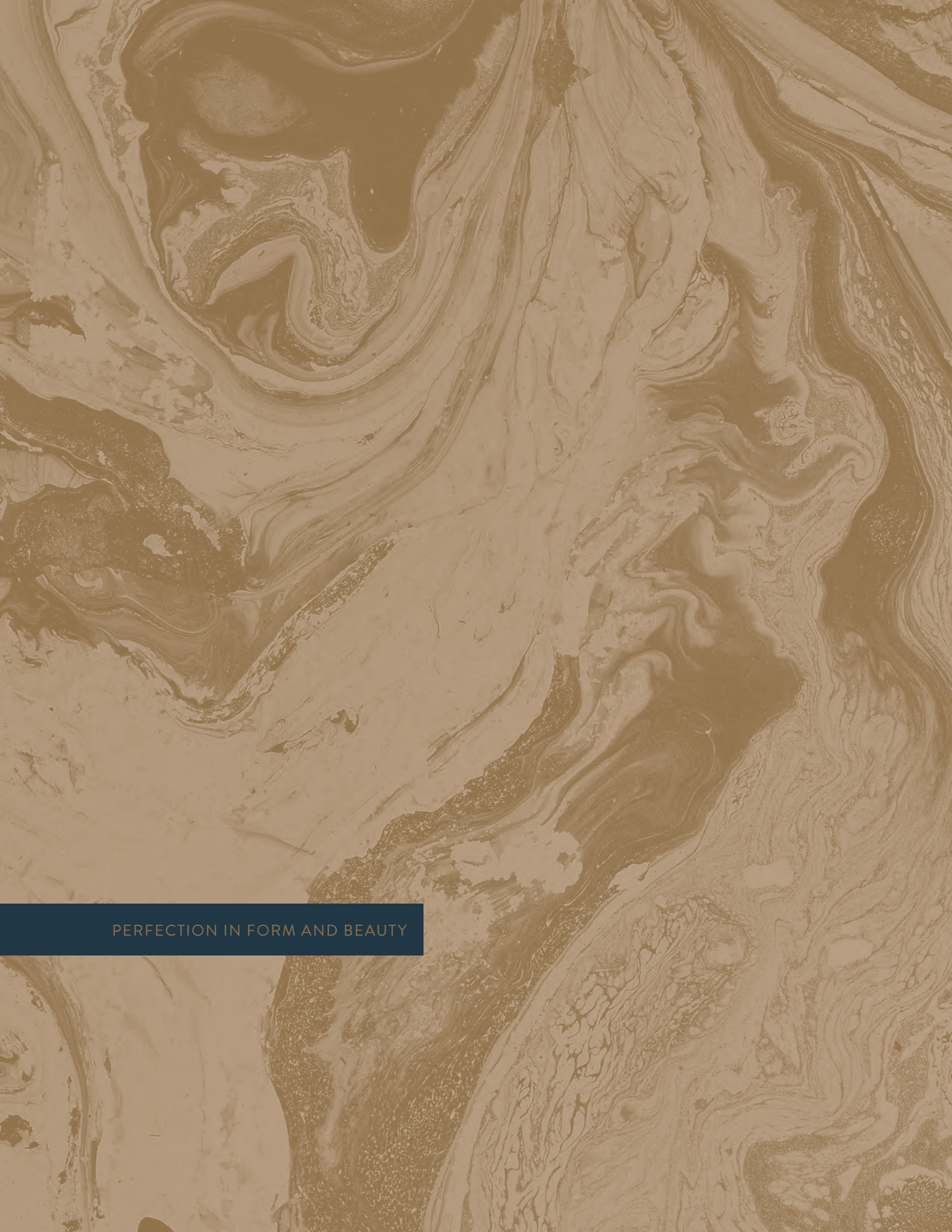
NOBLE MATERIALS

DESIGN IS EXQUISITE

A CURATED COLLECTION OF TRUE ALCHEMY

shaw hospitality group™

CARPET TILE + BROADLOOM FOR PUBLIC AND PRIVATE SPACES



PERFECTION IN FORM AND BEAUTY



pyrite field YF25733



ENTER THE ALCHEMIST

Sacred geometry. Meticulously plotted diagrams. Charted experimentation. The hierarchy of **NOBLE MATERIALS** revealed. Metallic inlays form opulent details in natural textures. Gleaming and lustrous in guest rooms and lobbies, nooks and corridors. A curated study of true alchemy for every space – in tile, broadloom and lush pile.

Design is exquisite.





MARBLE SET IN MOTION



Inspired by earthen elements in motion, designers experimented with marbling techniques. Pigment and water on paper create a fluid swirl. The freeform shapes and aqueous effects appear to pour across the floor, flowing through the space.



slate corridor YN25710



GOLD VEINING BUILDS SCALE

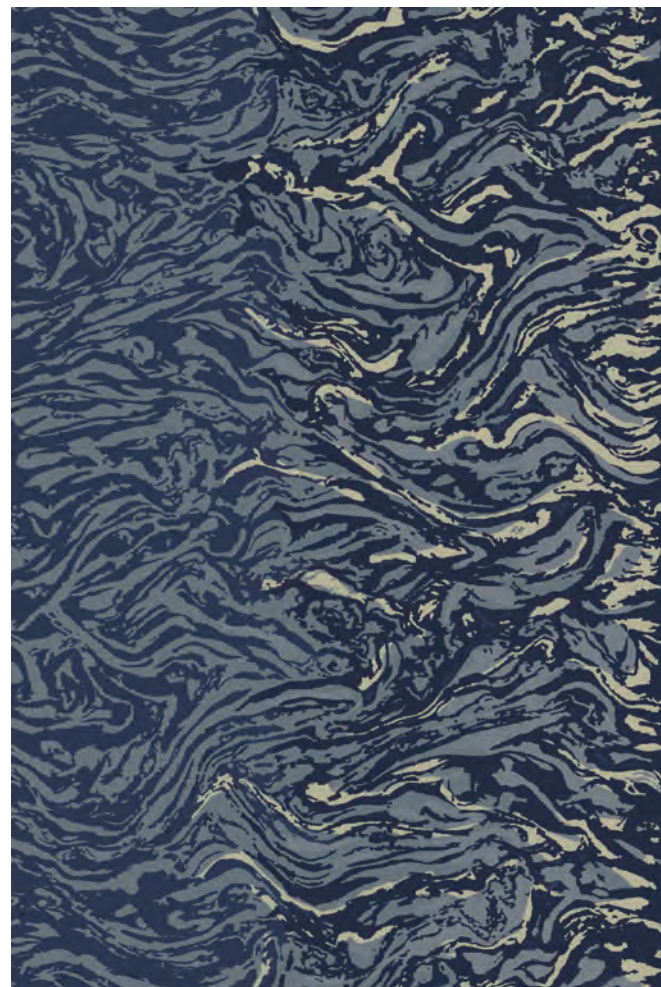
facet field YF25727



BRILLIANCE UNEARTHED

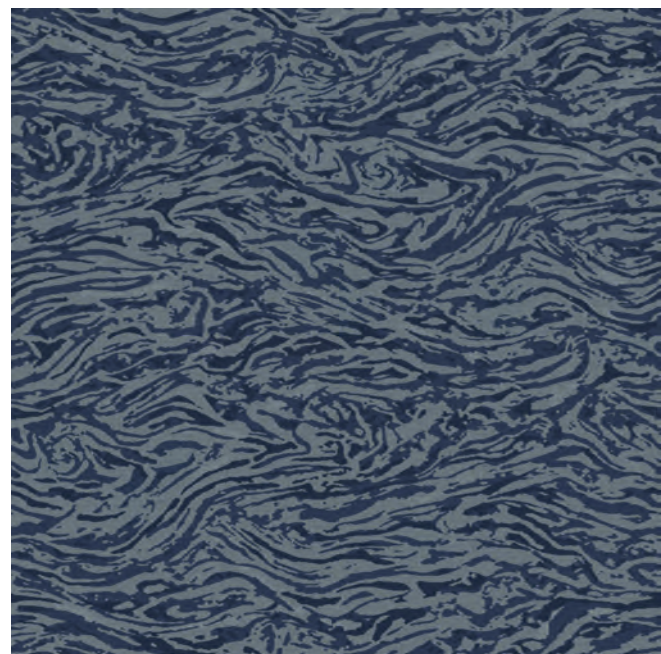


LUSTER CORRIDOR
YN25714 | CORRIDOR | SIZE: 6' W x 9' L | 1.83 m x 2.74 m



1	2	3
5236D cut loop	CJ491 cut loop	N014 loop

MARBLEIZED FIELD
YF25731 | FIELD | REPEAT: 6' W x 6' L | 1.83 m x 1.83 m



1	2
5236D cut loop	CJ491 cut loop

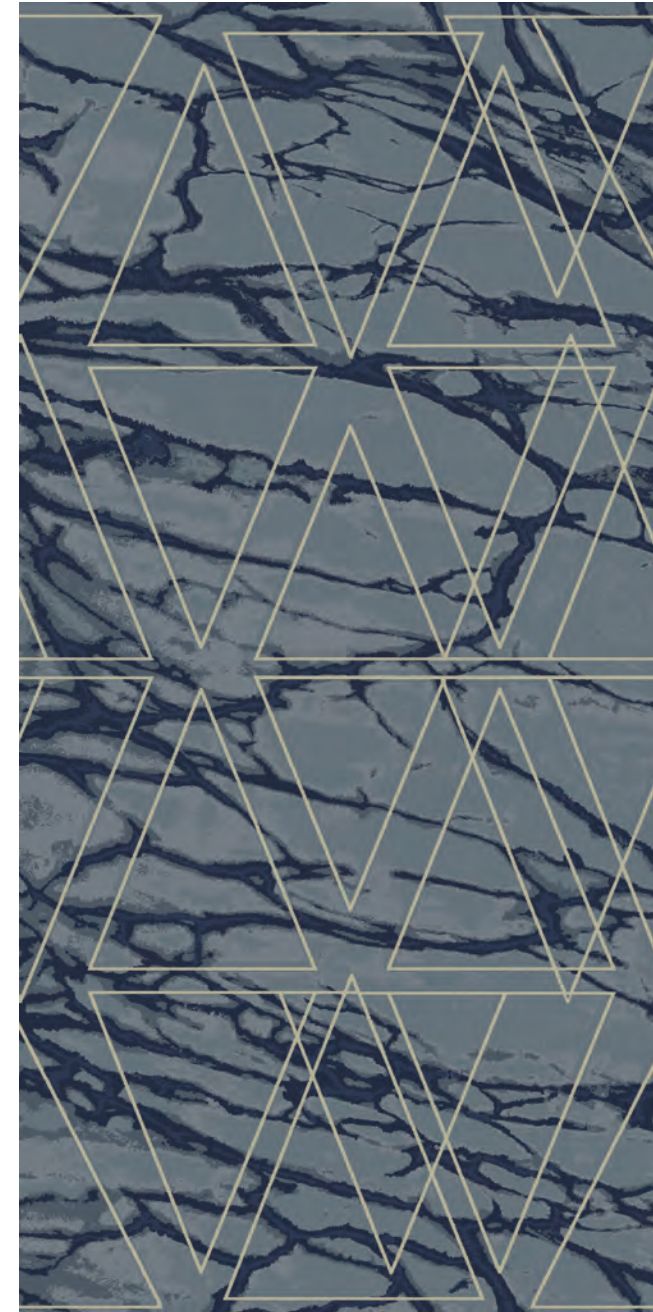


luster corridor YN25714



CARRARA GILT CORRIDOR

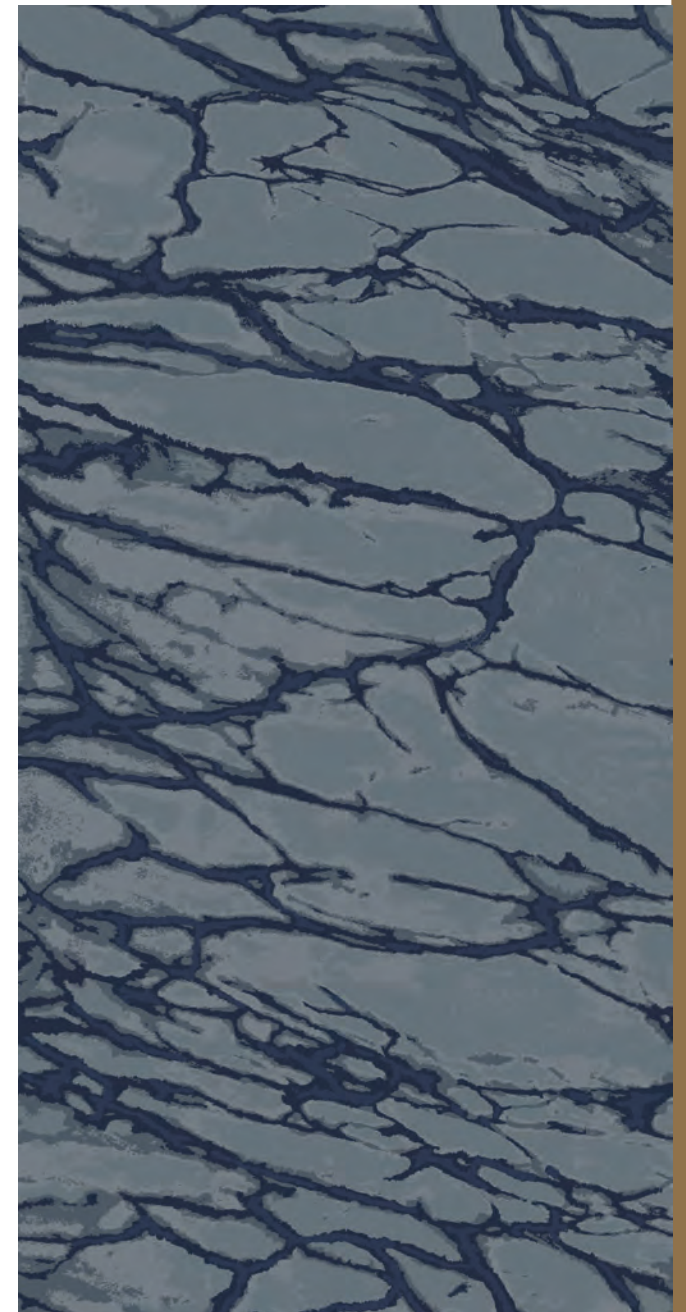
YN25712 | CORRIDOR | SIZE: 6' W x 12'3" L | 1.83 m x 3.73 m



1	2	3	4
5236D cut loop	5656D cut	CJ491 cut loop	N014 loop

CARRARA CORRIDOR

YN25716 | CORRIDOR | SIZE: 6' W x 12' 3" L | 1.83 M x 3.73 M



1	2	3
5236D cut loop	5656D cut	CJ491 cut loop

SACRED CORRIDOR

YN25711 | CORRIDOR | SIZE: 6' W x 10' 11" L | 1.83 m x 3.33 m



1	2
CJ491 cut	N014 loop

SACRED FIELD

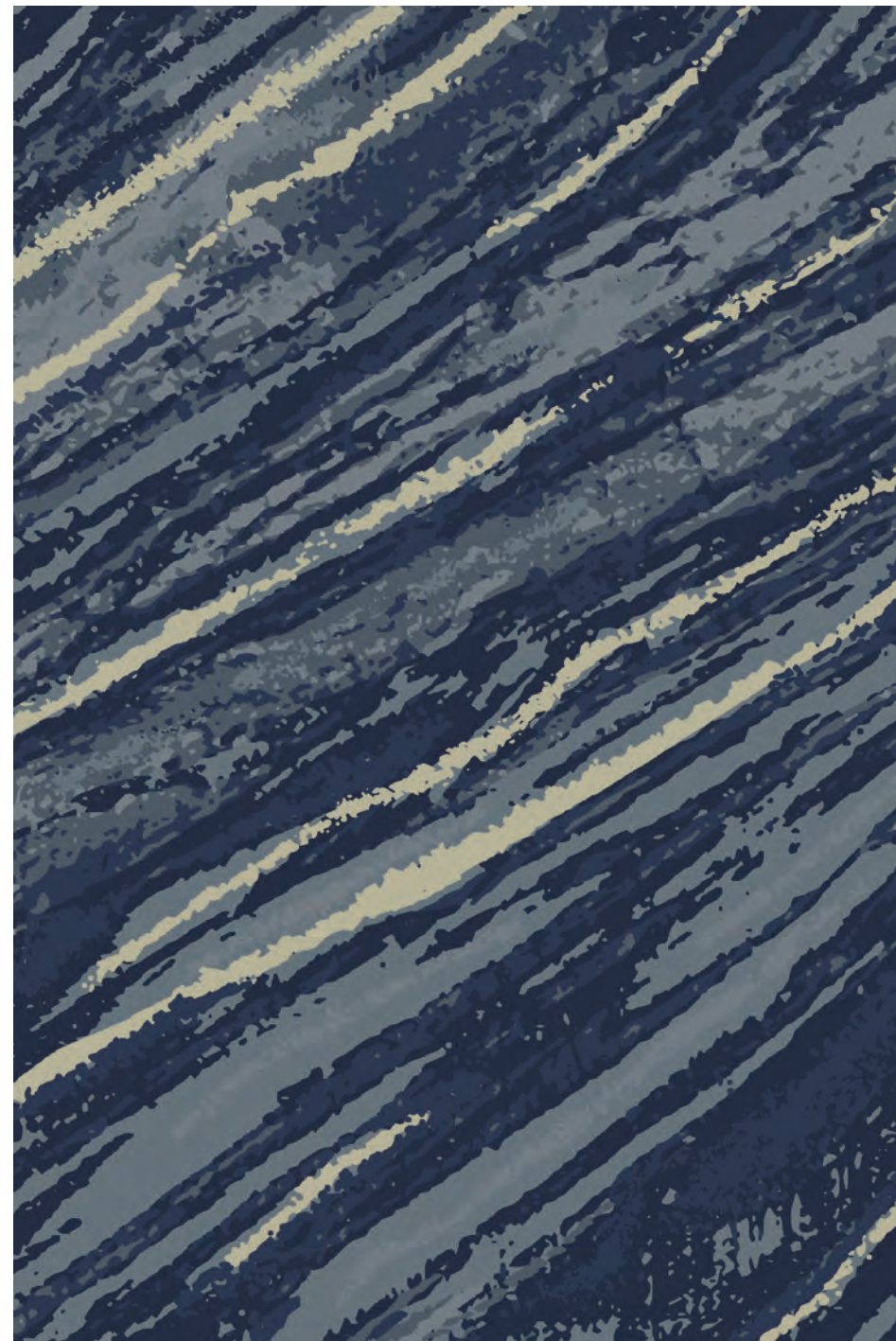
YF25730 | FIELD | REPEAT: 6' W x 6' L | 1.83 m x 1.83 m



1	2
CJ491 cut	N014 loop

ONYX RUG

YR25717 | RUG | SIZE: 12' W x 17' L 10.4" | 3.66 m x 5.44 m



1	2	3	4
5236D cut loop	5656D cut	CJ491 cut loop	N014 loop

FACET FIELD

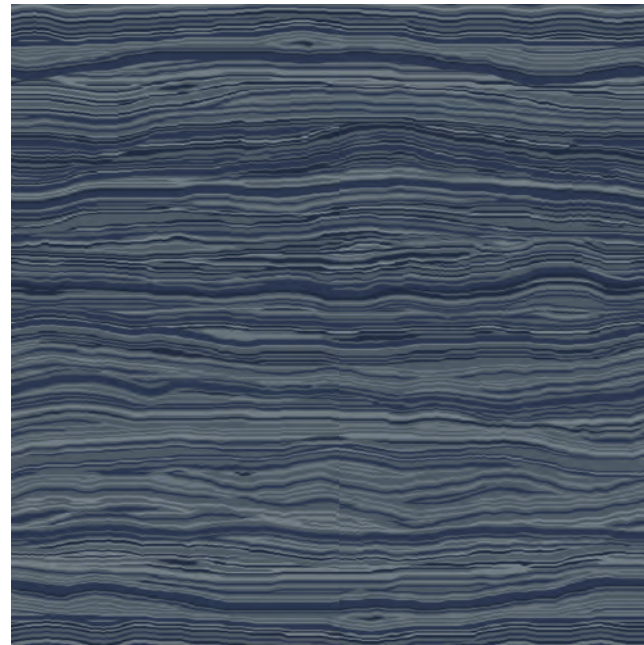
YF25727 | FIELD | SIZE: 6' W x 6' L | 1.83 m x 1.83 m



1	2	3	4
5236D cut loop	5656D cut	CJ491 cut loop	N014 loop

DRIFT FIELD

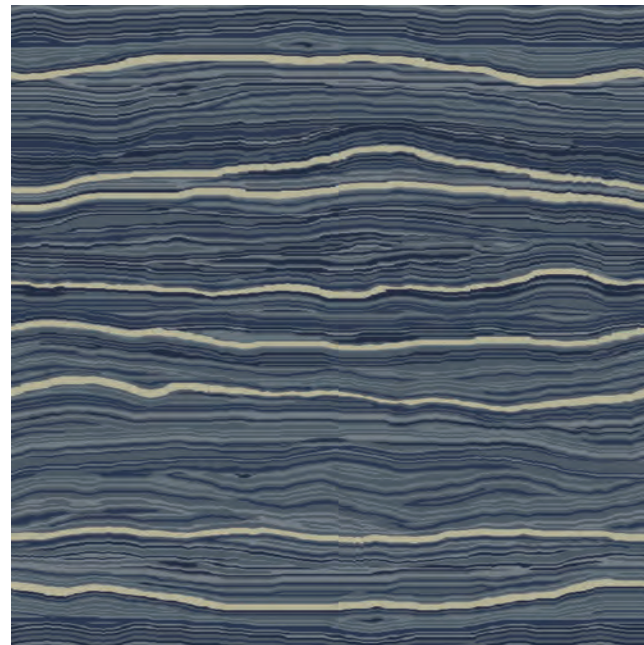
YF25726 | FIELD | REPEAT: 6' W x 6' L | 1.83 m x 1.83 m



1	2	3
5236D cut loop	5656D cut loop	CJ491 cut loop

DRIFT GILDED FIELD

YF25724 | FIELD | REPEAT: 6' W x 6' L | 1.83 m x 1.83 m



1	2	3	4
5236D cut loop	5656D cut loop	CJ491 cut loop	N014 loop

MOLTEN GOLD RUG

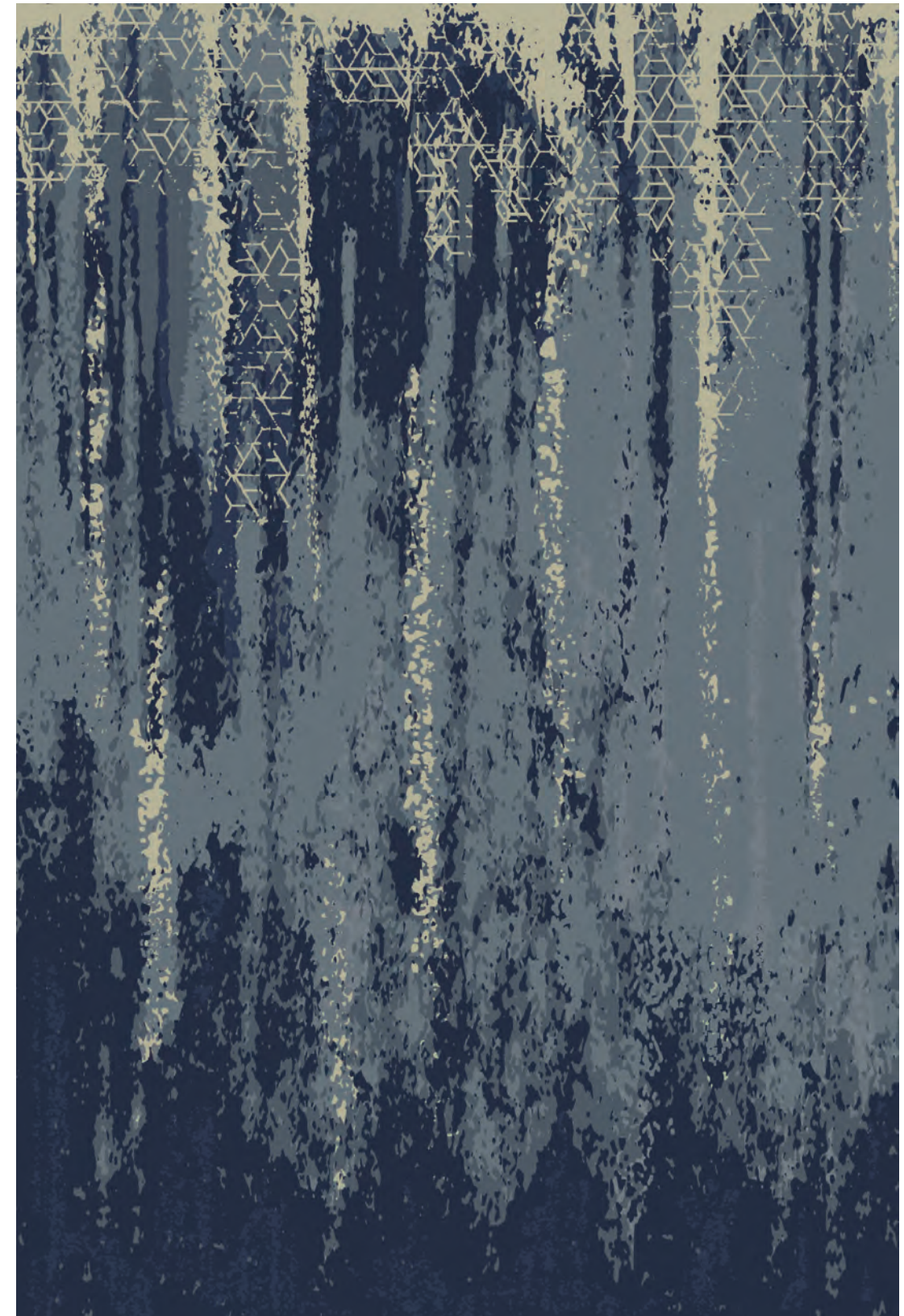
YR21721 | RUG | SIZE: 12' W x 17' 10.4" L | 3.66 m x 5.44 m



1	2	3	4
5236D cut loop	5656D cut loop	CJ491 cut loop	N014 loop

CASCADE RUG

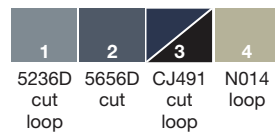
YR25718 | RUG | SIZE: 12' W x 17' 10.4" L | 3.66 m x 5.44 m



1	2	3	4
5236D cut loop	5656D cut loop	CJ491 cut loop	N014 loop

GOLD INLAY RUG

YR25723 | RUG | SIZE: 12' W x 17' 10.4" L | 3.66 m x 5.44 m



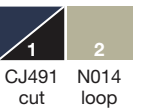
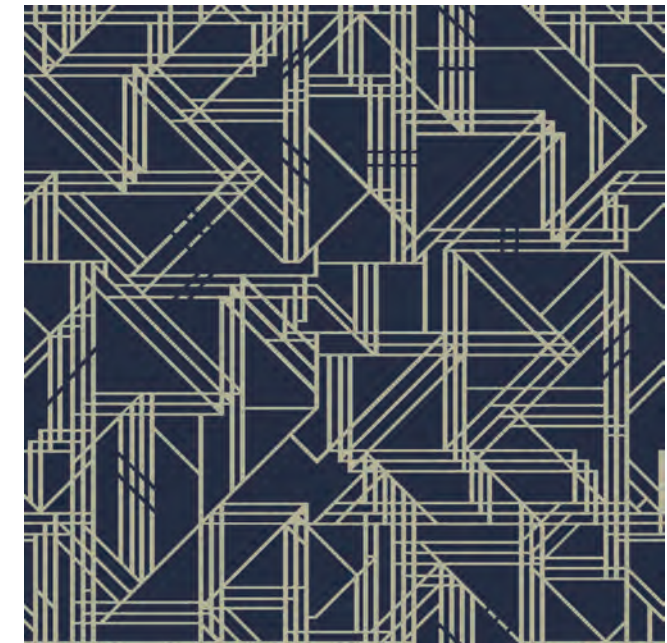
AXIS CORRIDOR

YN25706 | CORRIDOR | SIZE: 6' W x 16' L | 1.83 m x 4.88 m



TITANIUM FIELD

YF25728 | FIELD | REPEAT: 6' W x 6' L | 1.83 m x 1.83 m



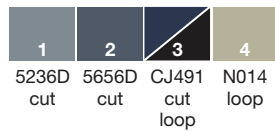
CHARTED CORRIDOR

YN25709 | CORRIDOR | SIZE: 6' W x 9' L | 1.83 m x 2.74 m



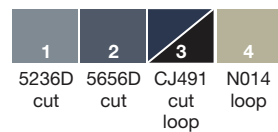
ALLOY RUG

YR25722 | RUG | SIZE: 12' W x 17' 10.4" L | 3.66 m x 5.44 m



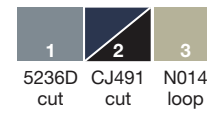
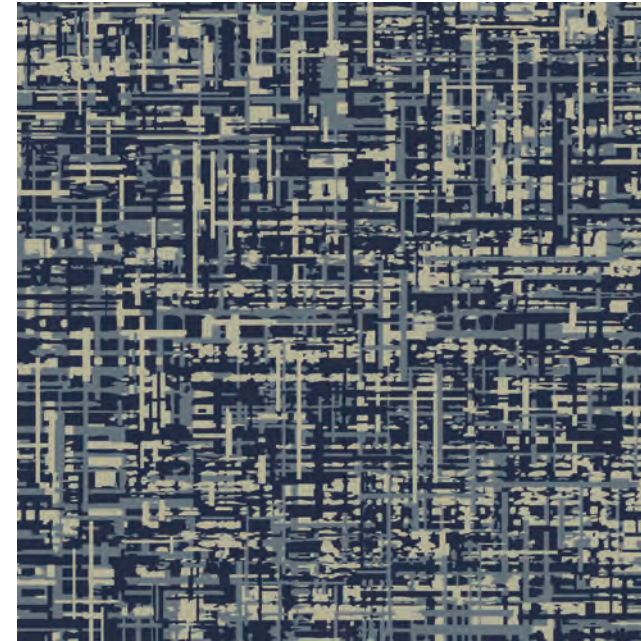
ALLOY CORRIDOR

YN25708 | CORRIDOR | SIZE: 6' W x 16' L | 1.83 m x 4.88 m



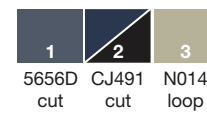
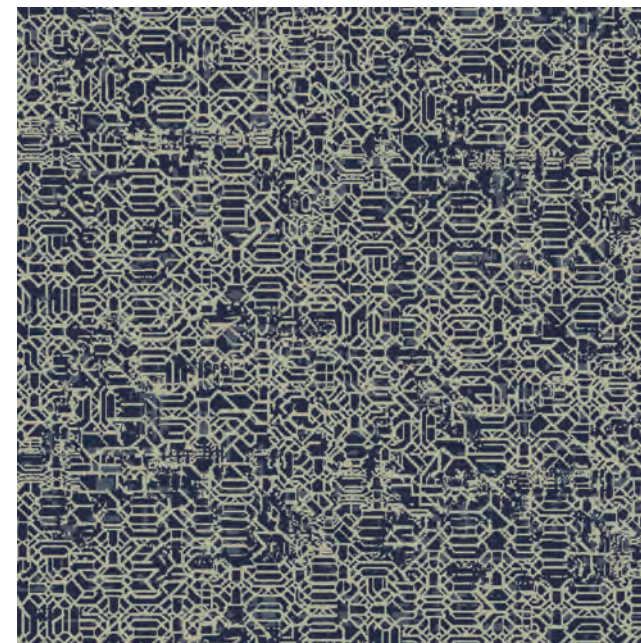
CODE FIELD

YF25732 | FIELD | REPEAT: 6' W x 6' L | 1.83 m x 1.83 m



ORNATE FIELD

YF25734 | FIELD | REPEAT: 6' W x 6' L | 1.83 m x 1.83 m



PYRITE FIELD

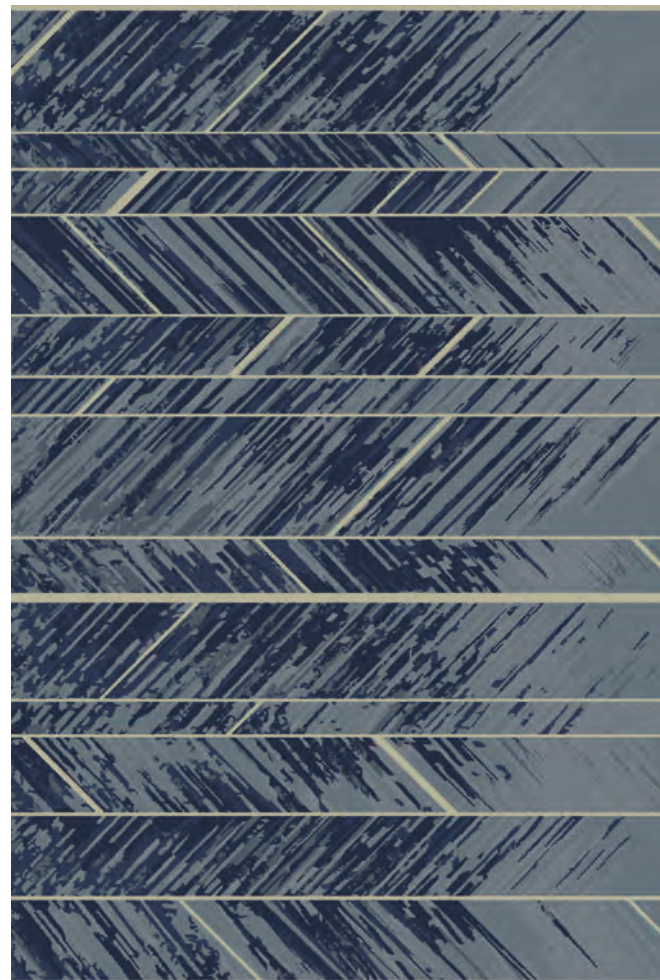
YF25733 | FIELD | REPEAT: 6' W x 6' L | 1.83 m x 1.83 m



1	2	3
5236D cut loop	CJ491 cut loop	N014 loop

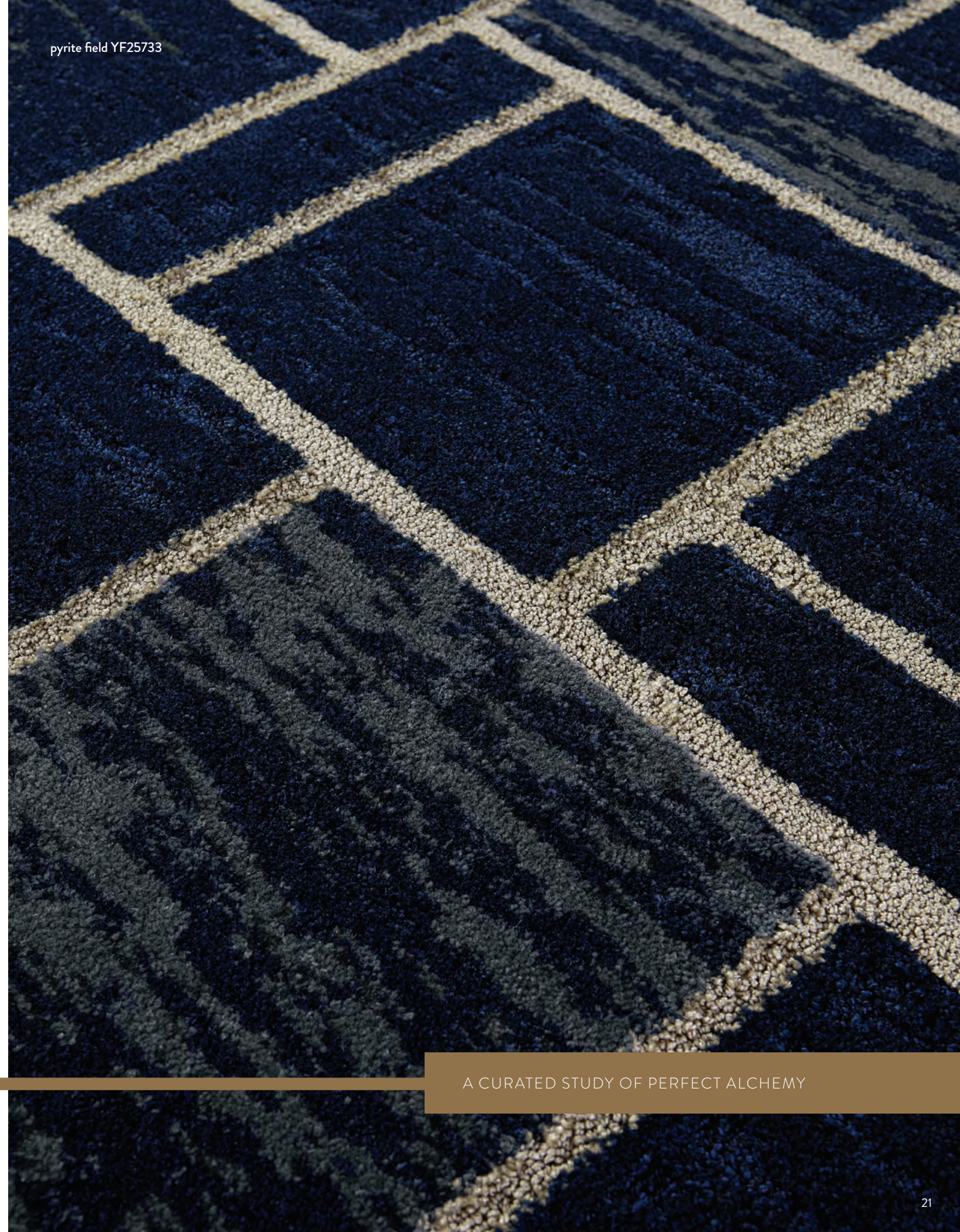
SLATE CORRIDOR

YN25710 | CORRIDOR | SIZE: 6' W x 9' L | 1.83 m x 2.74 m



1	2	3	4
5236D cut loop	5656D cut	CJ491 cut loop	N014 loop

pyrite field YF25733



A CURATED STUDY OF PERFECT ALCHEMY



EXPERIMENT
WITH
LUSTRE

ENTER THE GOLDEN AGE

MATTE SURFACES
JUXTAPOSED WITH
REFINED METAL
DETAILS



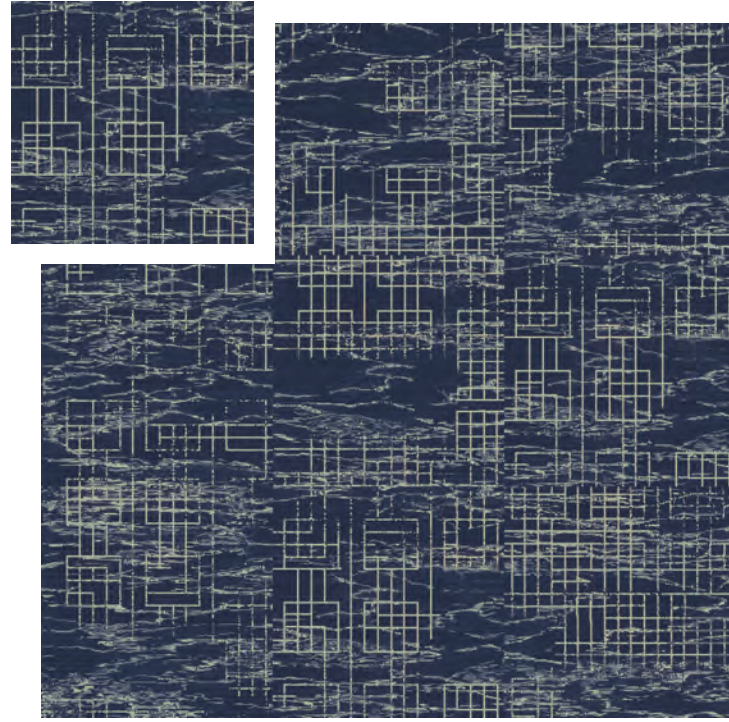
PERFORM YOUR OWN
DESIGN ALCHEMY

Curate your space with **NOBLE MATERIALS** carpet tile. Intentional seams give the feel of stone slabs and machine-cut marble. Metal accents add harmony and lustre. Flexible installation methods give you creative possibilities.

Go monolithic for a seamless transformation. Shift perspective with brick and ashlar. Create engaging depth with quarter turn. Explore the boundaries of design with random installation.

TECTONIC TILE

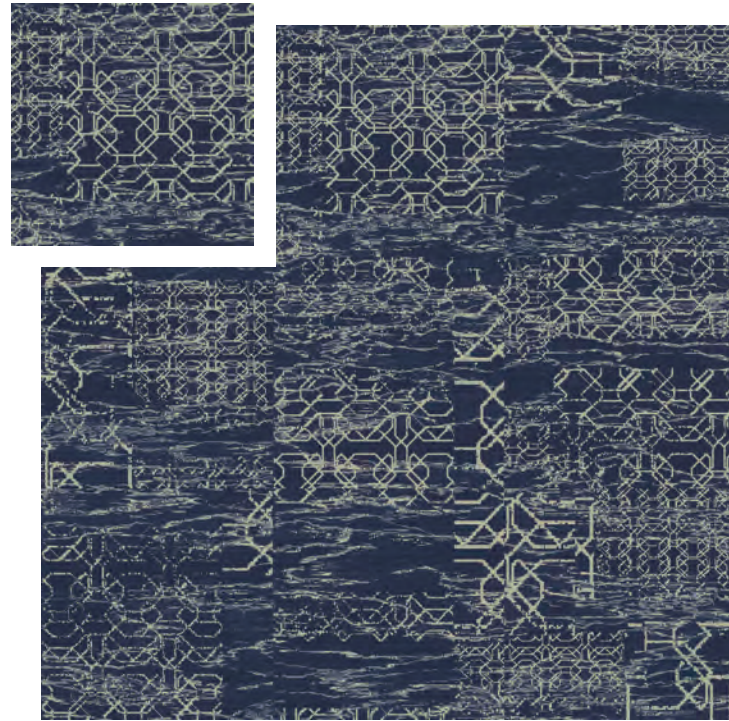
CT25834 | TILE | SIZE: 24" W x 24" L | 61 cm x 61 cm



A	B	C	D
CJ491 cut loop	5656D loop	5236D loop	N014 loop

OPULENT TILE

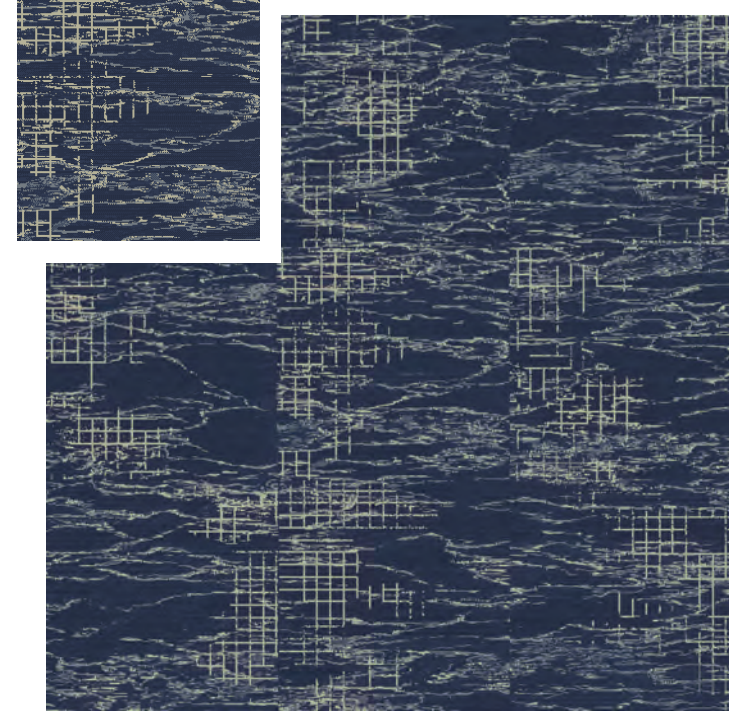
CT25832 | TILE | SIZE: 24" W x 24" L | 61 cm x 61 cm



A	B	C	D
CJ491 cut loop	5656D loop	5236D loop	N014 loop

EMERGE TILE

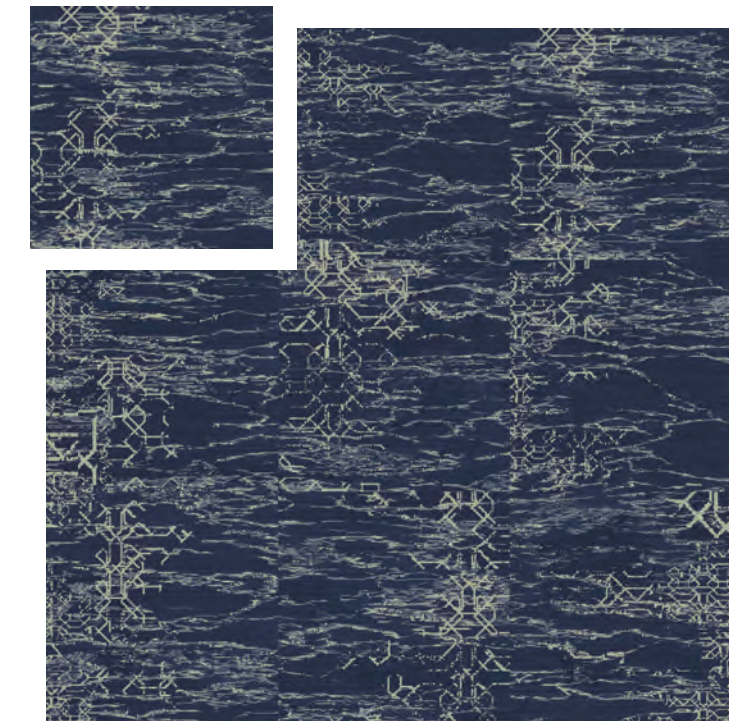
CT25835 | TILE | SIZE: 24" W x 24" L | 61 cm x 61 cm



A	B	C	D
CJ491 cut loop	5656D loop	5236D loop	N014 loop

ADORNED TILE

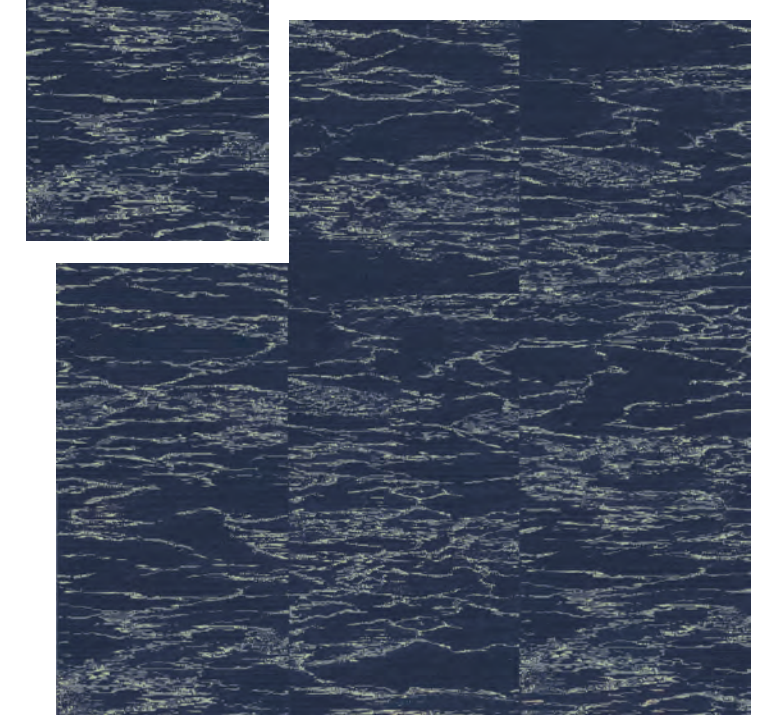
CT25833 | TILE | SIZE: 24" W x 24" L | 61 cm X 61 cm



A	B	C	D
CJ491 cut loop	5656D loop	5236D loop	N014 loop

SWAY TILE

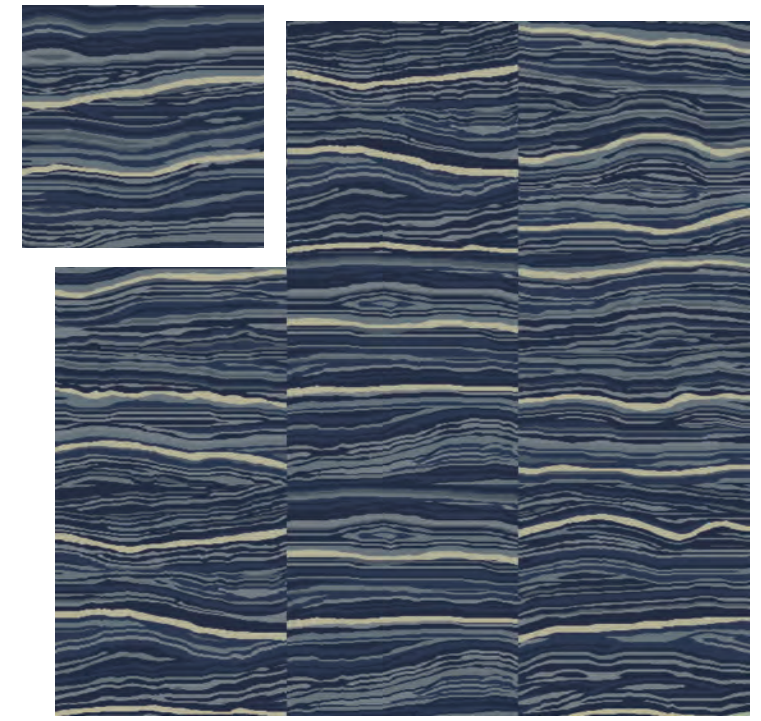
CT25828 | TILE | SIZE: 24" W x 24" L | 61 cm x 61 cm



A	B	C	D
CJ491 cut loop	5656D loop	5236D loop	N014 loop

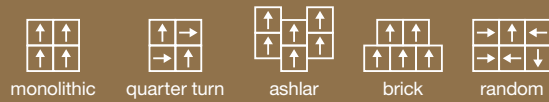
RIFT TILE

CT25837 | TILE | SIZE: 24" W x 24" L | 61 cm x 61 cm



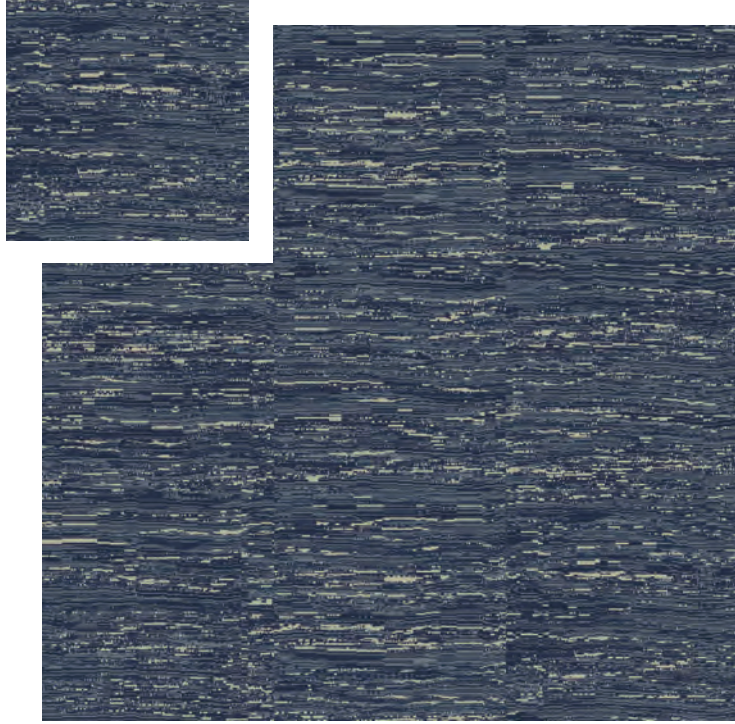
A	B	C	D
CJ491 cut loop	5656D cut	5236D cut loop	N014 loop

RECOMMENDED INSTALLATION METHODS



FINE AGATE TILE

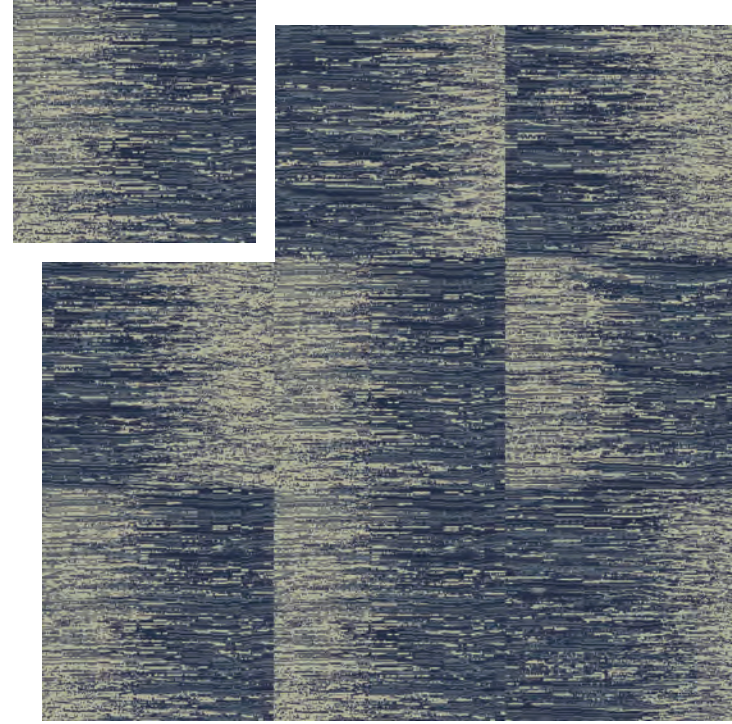
CT25829 | TILE | SIZE: 24" W x 24" L | 61 cm X 61 cm



A	B	C	D
CJ491	5656D	5236D	N014
cut	cut	loop	loop
loop	loop		

GILDED TILE

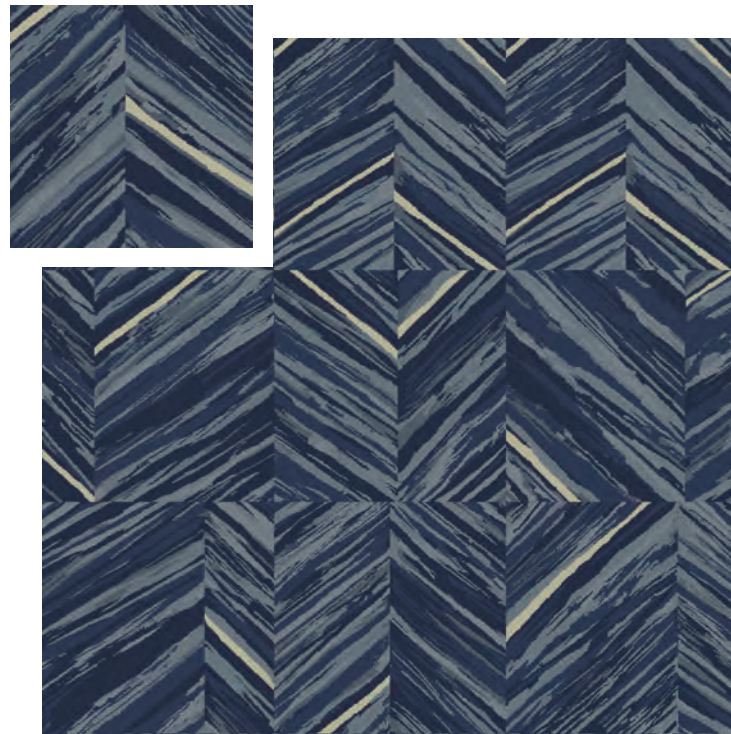
CT25830 | TILE | SIZE: 24" W x 24" L | 61 cm X 61 cm



A	B	C	D
CJ491	5656D	5236D	N014
cut	cut	loop	loop
loop	loop		

BOOKMATCH TILE

CT25836 | TILE | SIZE: 24" W x 24" L | 61 cm X 61 cm



A	B	C	D
CJ491	5656D	5236D	N014
cut	cut	cut	loop
loop	loop	loop	

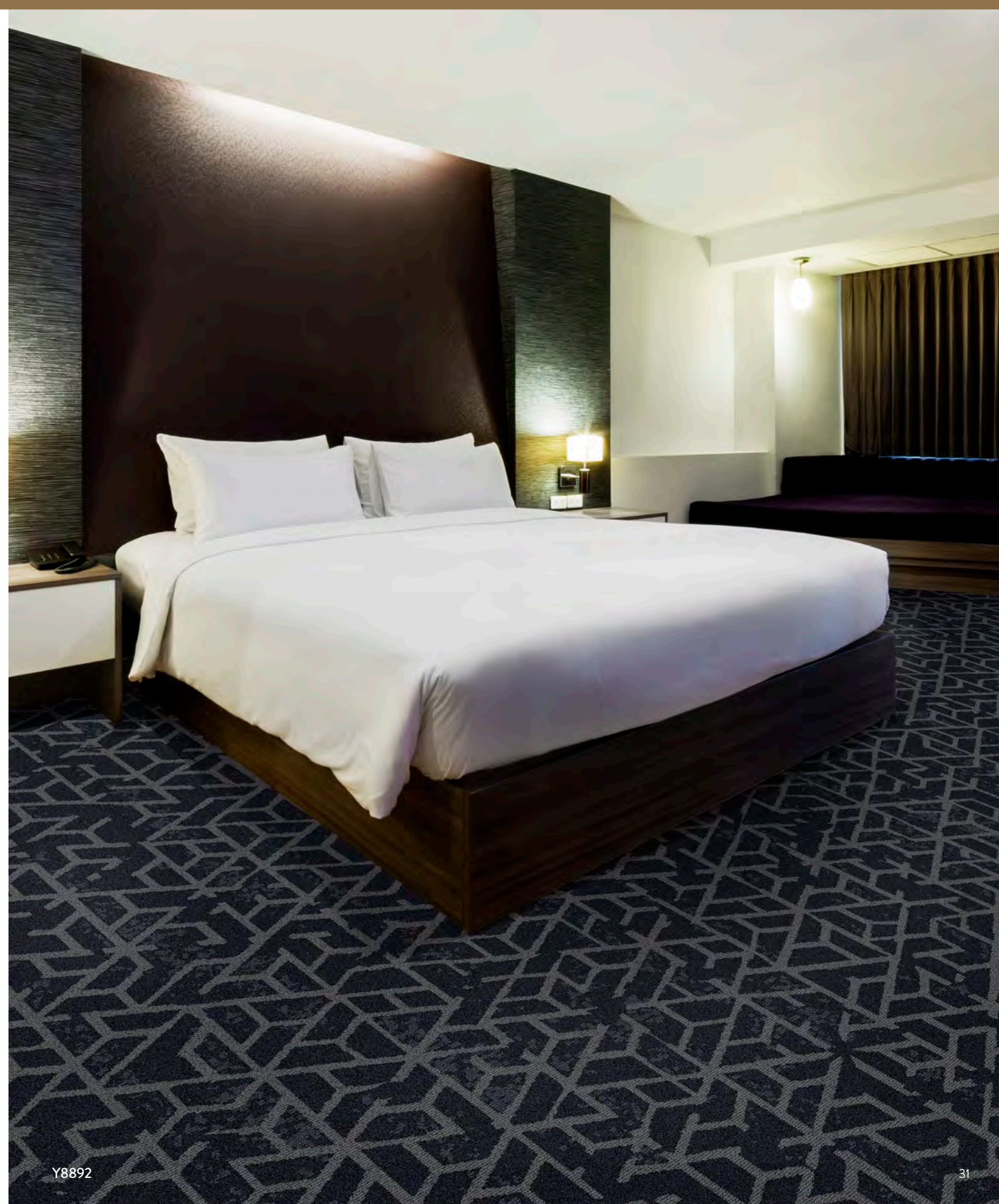
bookmatch tile CT25836



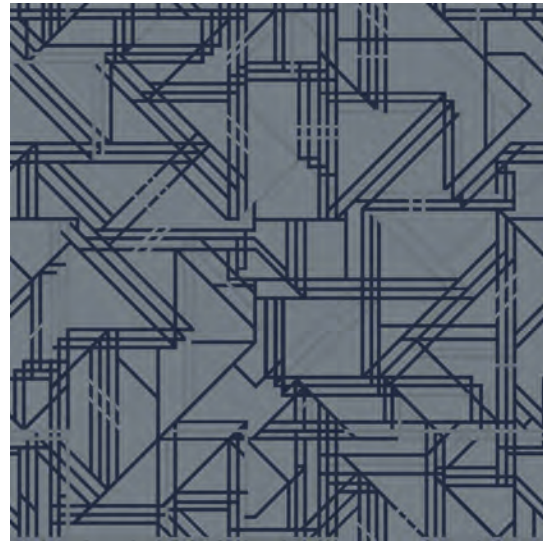
RAW ELEMENTS. REFINED DETAIL.

LAVISH & LUXE

Custom coordinates for private spaces. **Guestroom** patterns meld fluidly with the entire **NOBLE MATERIALS** collection. Natural, layered dimension is pure plush.

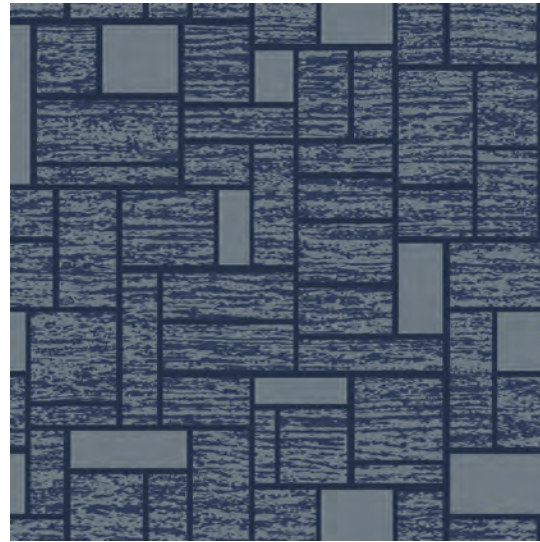


Y8891
FIELD | REPEAT: 6' W x 6' L | 1.83 m x 1.83 m



A	B
5236D	CJ491
cut	cut
loop	

Y8890
FIELD | REPEAT: 6' W x 6' L | 1.83 m x 1.83 m



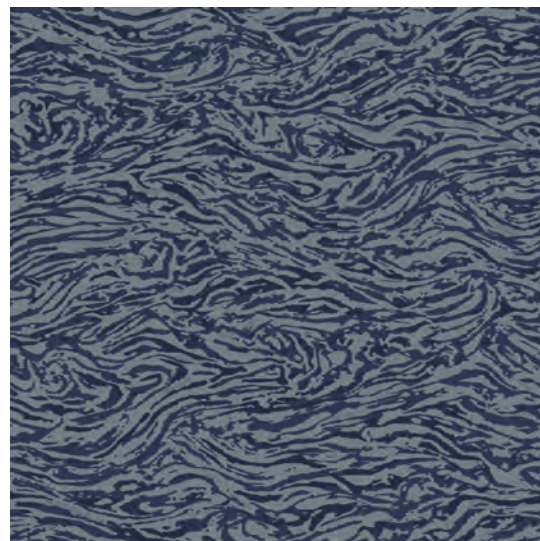
A	B
5236D	CJ491
cut	cut
loop	loop

Y8892
FIELD | REPEAT: 6' W x 6' L | 1.83 m x 1.83 m



A	B
5236D	CJ491
cut	cut
loop	loop

Y8893
FIELD | REPEAT: 6' W x 6' L | 1.83 m x 1.83 m



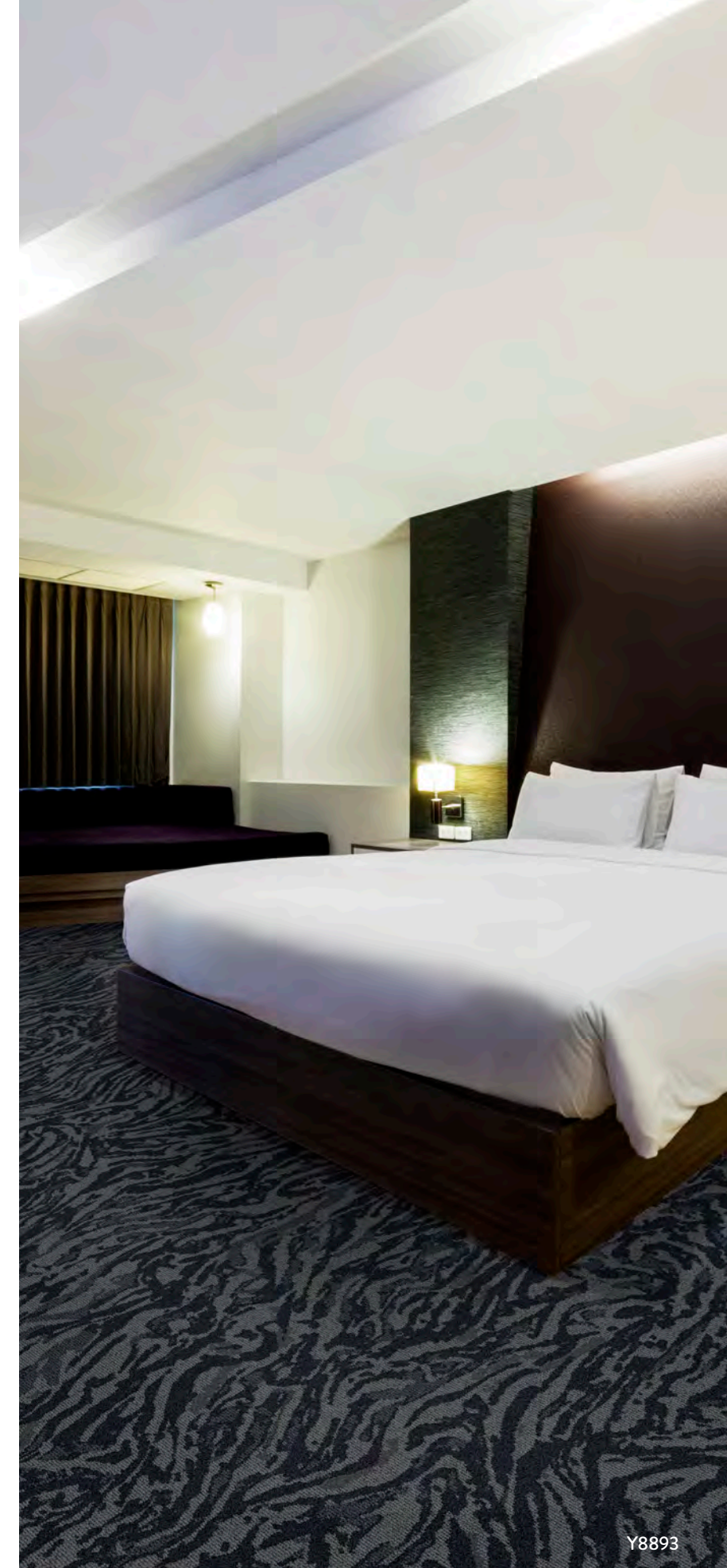
A	B
5236D	CJ491
cut	cut
loop	loop

Y8894
FIELD | REPEAT: 6' W x 6' L | 1.83 m x 1.83 m



A	B
5236D	CJ491
cut	cut
loop	loop

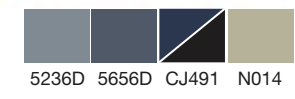
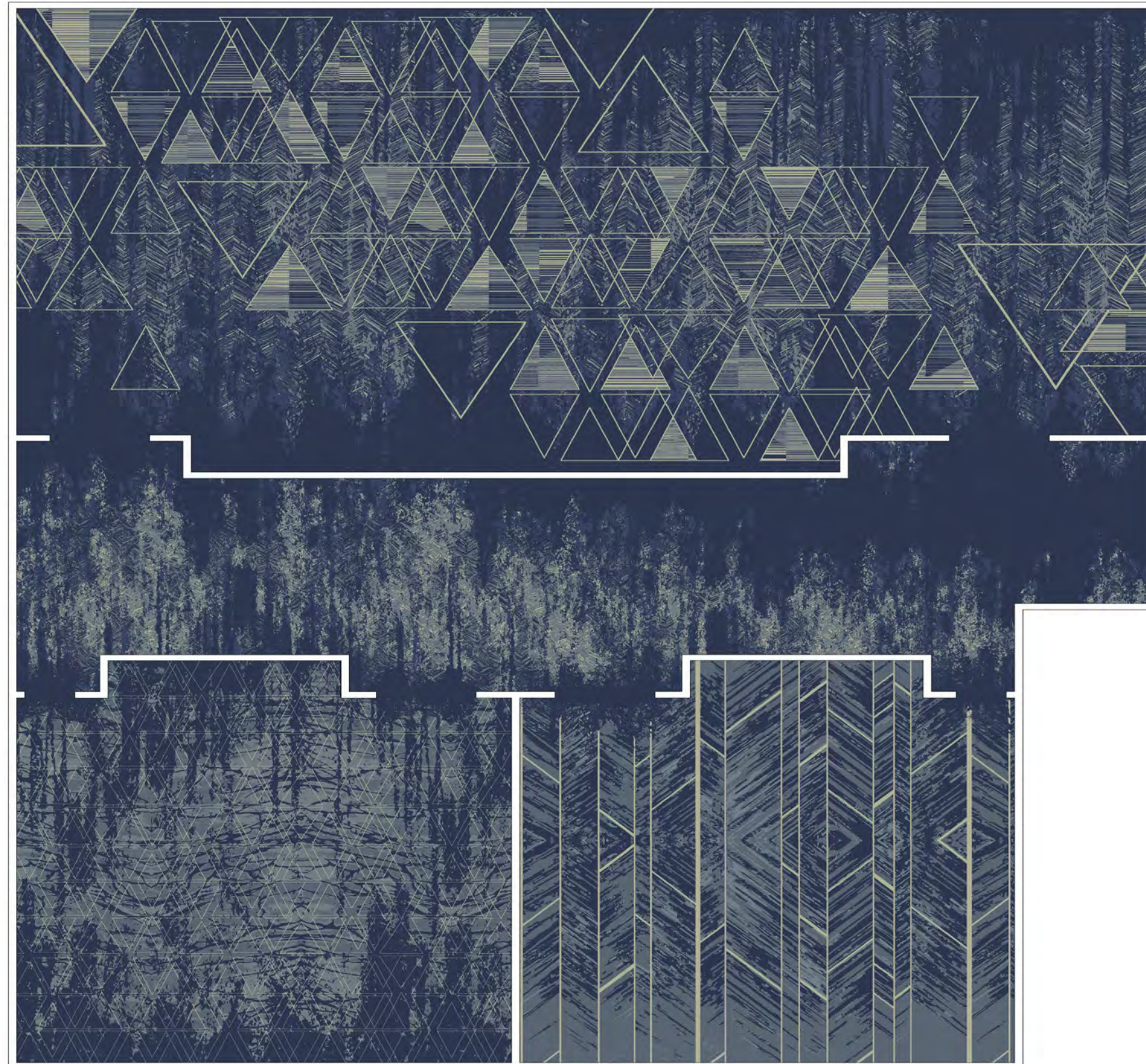
MARBLISED FLUIDITY WITH
EXQUISITE DETAIL



Y8893

SACRED GEOMETRY EVERYWHERE

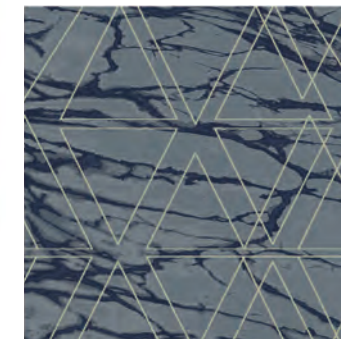
Gold veining builds scale in a vast lobby. Sleek stonework shifts and merges down the corridor. The Noble Materials collection flows from large scale to small, matte to shine.



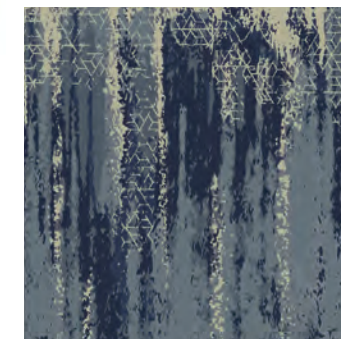
ALLOY RUG
YR25722



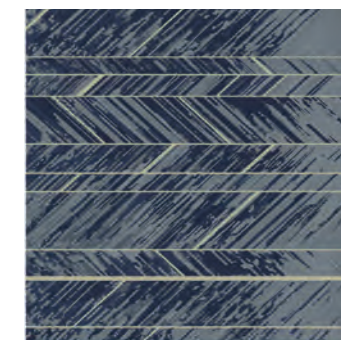
CARRARA GILT CORRIDOR
YN25712



CASCADE RUG
YR25718



SLATE CORRIDOR
YN25710





SLATE CORRIDOR
YN25710



FACET FIELD
YF25727



SLEEK SPACES

Natural formations and opulent textures create balance and depth on the floor. Add variety and scale, create movement and flow with custom coordinates from the collection. Experiment with Noble Materials at shawhospitalitygroup.com.



CASCADE RUG
YR25718

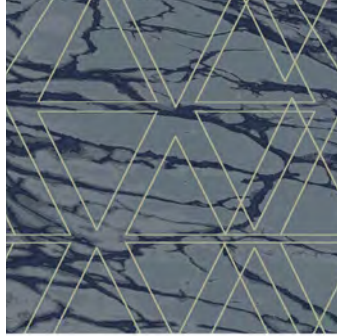


SACRED FIELD
YF25730

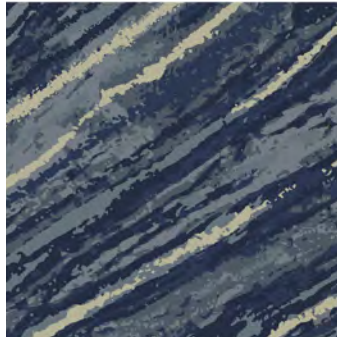


OPULENT FORMATIONS REVEALED

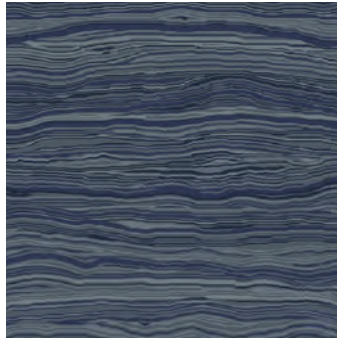
CARRARA GILT CORRIDOR
YN25712



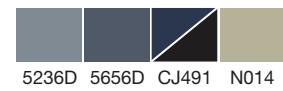
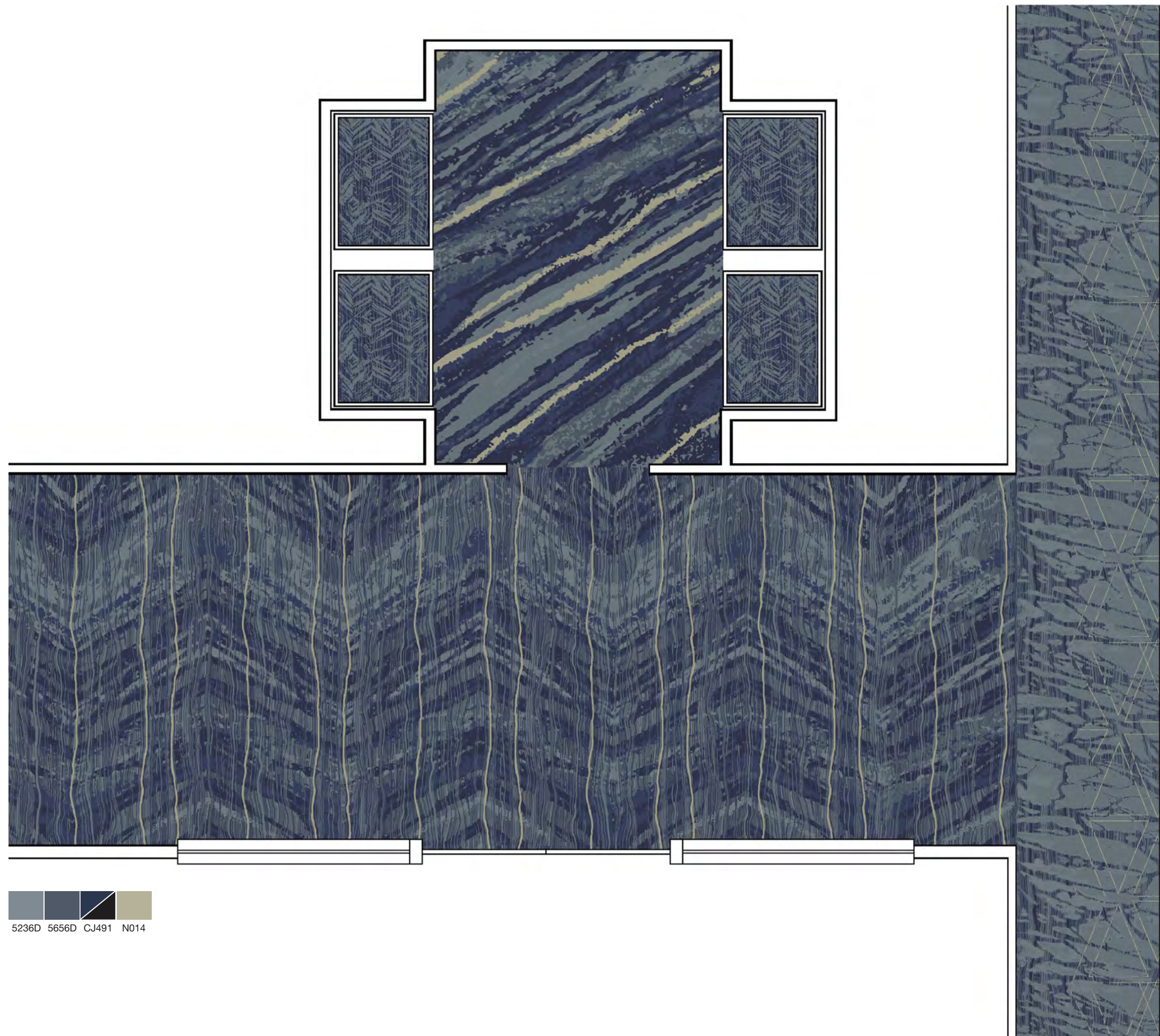
ONYX RUG
YR25717

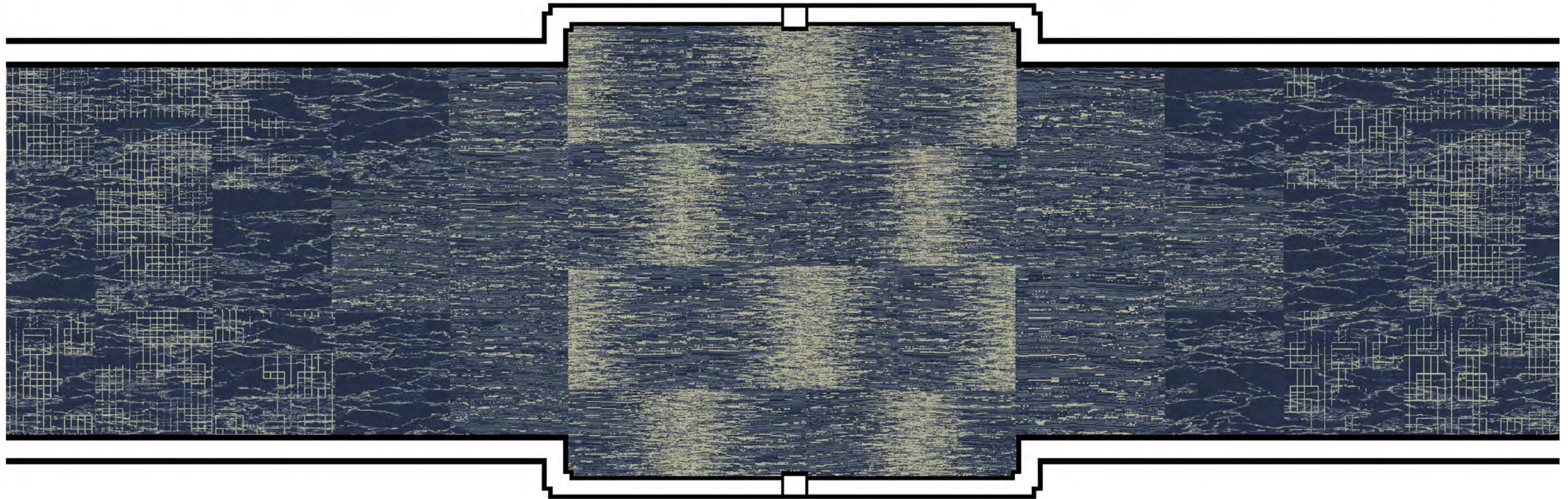


DRIFT FIELD
YF25726

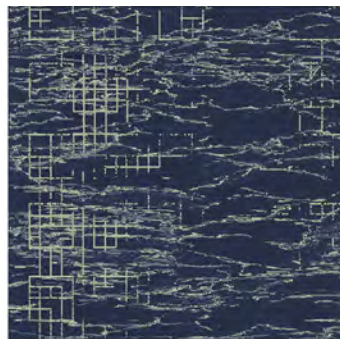


FACET FIELD
YF25727

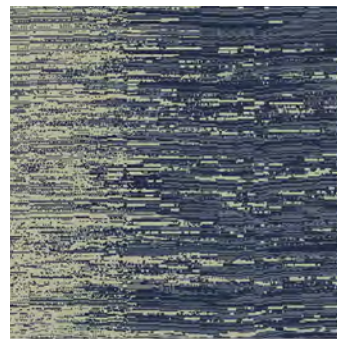




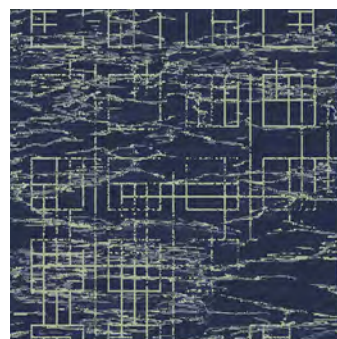
EMERGE TILE
CT25835



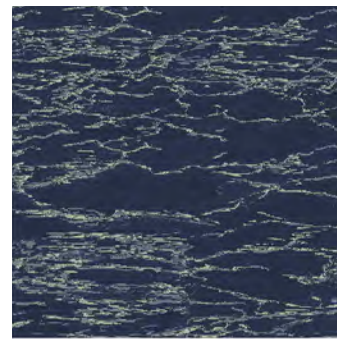
GILDED TILE
CT25830



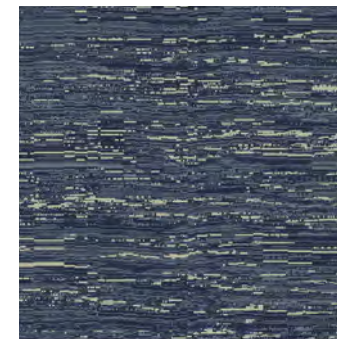
TECTONIC TILE
CT25834



SWAY TILE
CT25828



FINE AGATE
CT25829



ALCHEMY MEETS OPULENCE

Smooth surfaces in natural tones. Polished metal details for lavish appeal. Noble Materials from Shaw Contract Group is perfection for hotel environments, from open lobby and executive spaces to luxury guest suites. Visit shawcontractgroup.com to see the commercial collection.



fault 5A221 in alabaster gold 2011



TEXTURE WITH BRILLIANT DIMENSION



base metal 5A219 in onyx silver 18505



monolith 5A218 in carrara 18100



HONED TILE 5T134
in carrara 33100

SLAB TILE 5T133
in alabaster 33111
HONED TILE 5T134
in alabaster 33111
ALCHEMY TILE 5T135
in alabaster gold 33111



FORM TILE 5T136
in onyx silver 33505

SLAB TILE 5T133
in onyx 33505



FAULT 5A221



cararra silver 20100



alabaster gold 20111



element platinum 20506



talc platinum 20535



forge platinum 20518



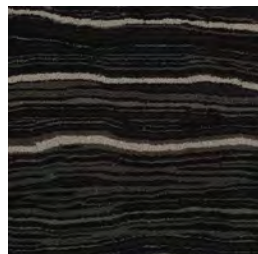
cornerstone copper 20555



slate palladium 20595



colossal bismuth 20496



onyx silver 20505

STRATA 5A220



cararra 20100



alabaster 20111



element 20506



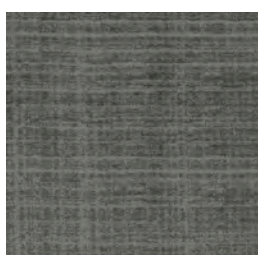
talc 20535



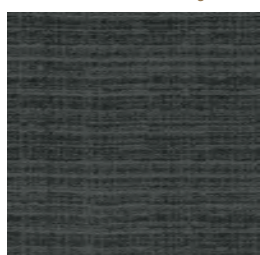
forge 20518



cornerstone 20555



slate 20595



colossal 20496

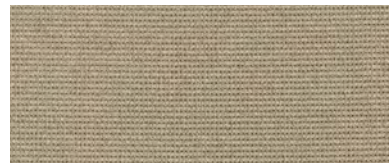


onyx 20505

BASE METAL 5A219



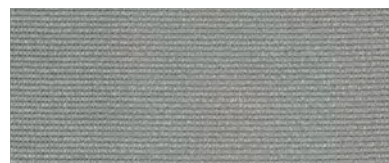
carrara silver 18100



alabaster gold 18111



element platinum 18506



talc platinum 18535



forge platinum 18518



cornerstone copper 18555



slate palladium 18595



colossal bismuth 18496



onyx silver 18505

MONOLITH 5A218



carrara 33100



alabaster 18111



element 18506



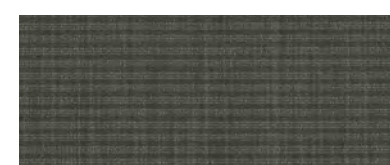
talc 18535



forge 18518



cornerstone 18555



slate 18595



colossal 18496

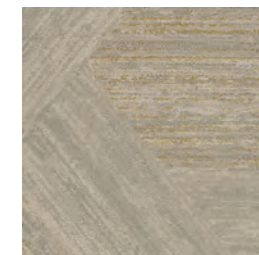


onyx 18505

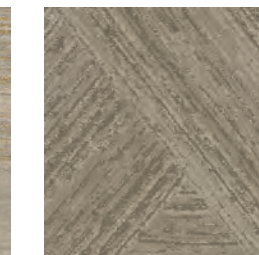
FORM 5T136 | ALCHEMY 5T135 shown in alchemy tile



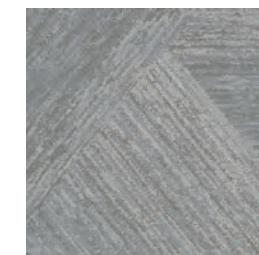
carrara silver 33100



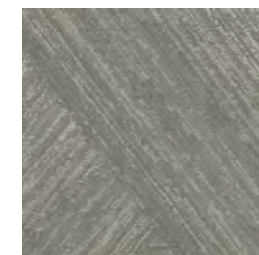
alabaster gold 33111



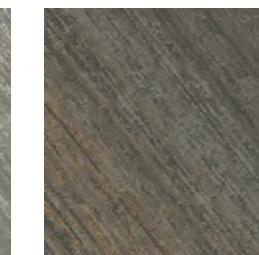
element platinum 33506



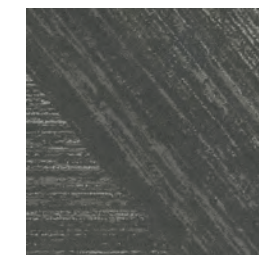
talc platinum 33535



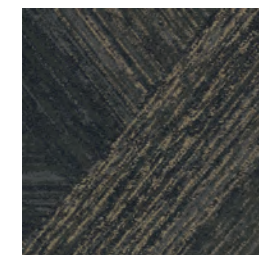
forge platinum 33518



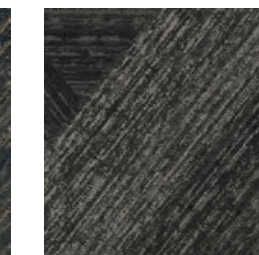
cornerstone copper 33555



slate palladium 33595

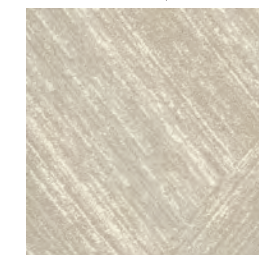


colossal bismuth 33496



onyx silver 33505

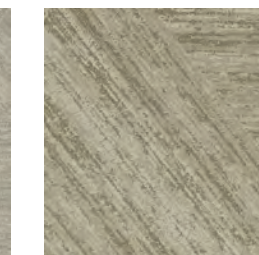
HONED 5T134 | SLAB 5T133 shown in slab tile



carrara 33100



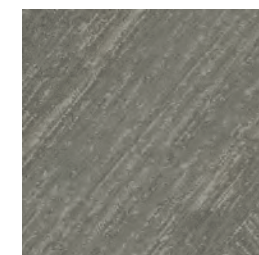
alabaster 33111



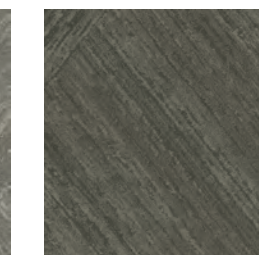
element 33506



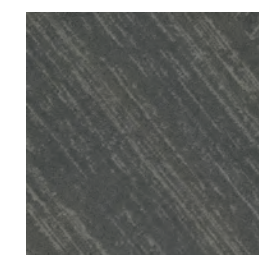
talc 33535



forge 33518



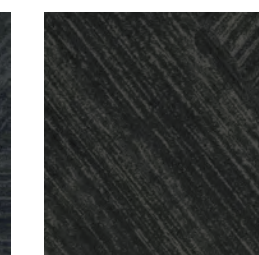
cornerstone 33555



slate 33595



colossal 33496



onyx 33505

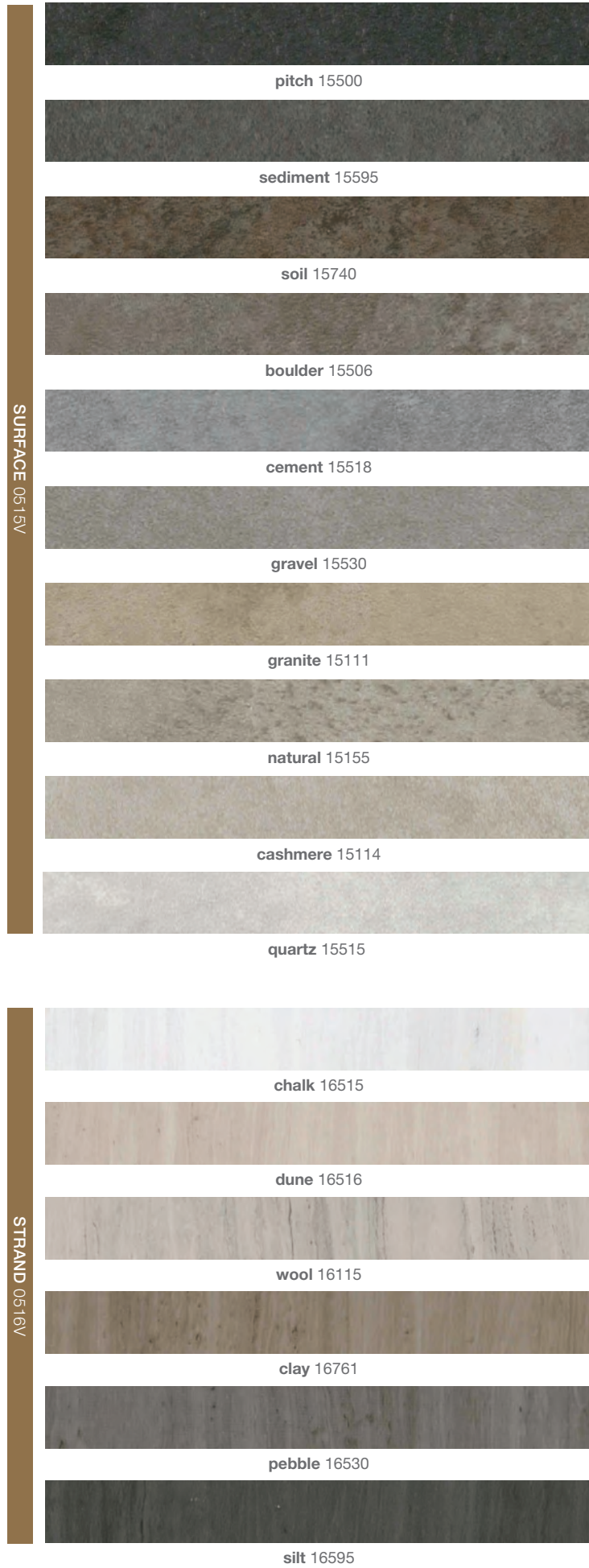
**SURFACE
STRAND**
DESIGN IS SOLID



CEMENTED ELEMENTS

Concrete characteristics. Linear stone. These are the subtle visuals of Surface and Strand, two 18x36 resilient designs. Mix styles and add scale. Bring an air of composed balance to architectural spaces. The 20 mil wear layer is perfect for heavy commercial traffic and the improved surface finish minimises scuffing, for enhanced performance and durability.

DESIGN IS SOLID

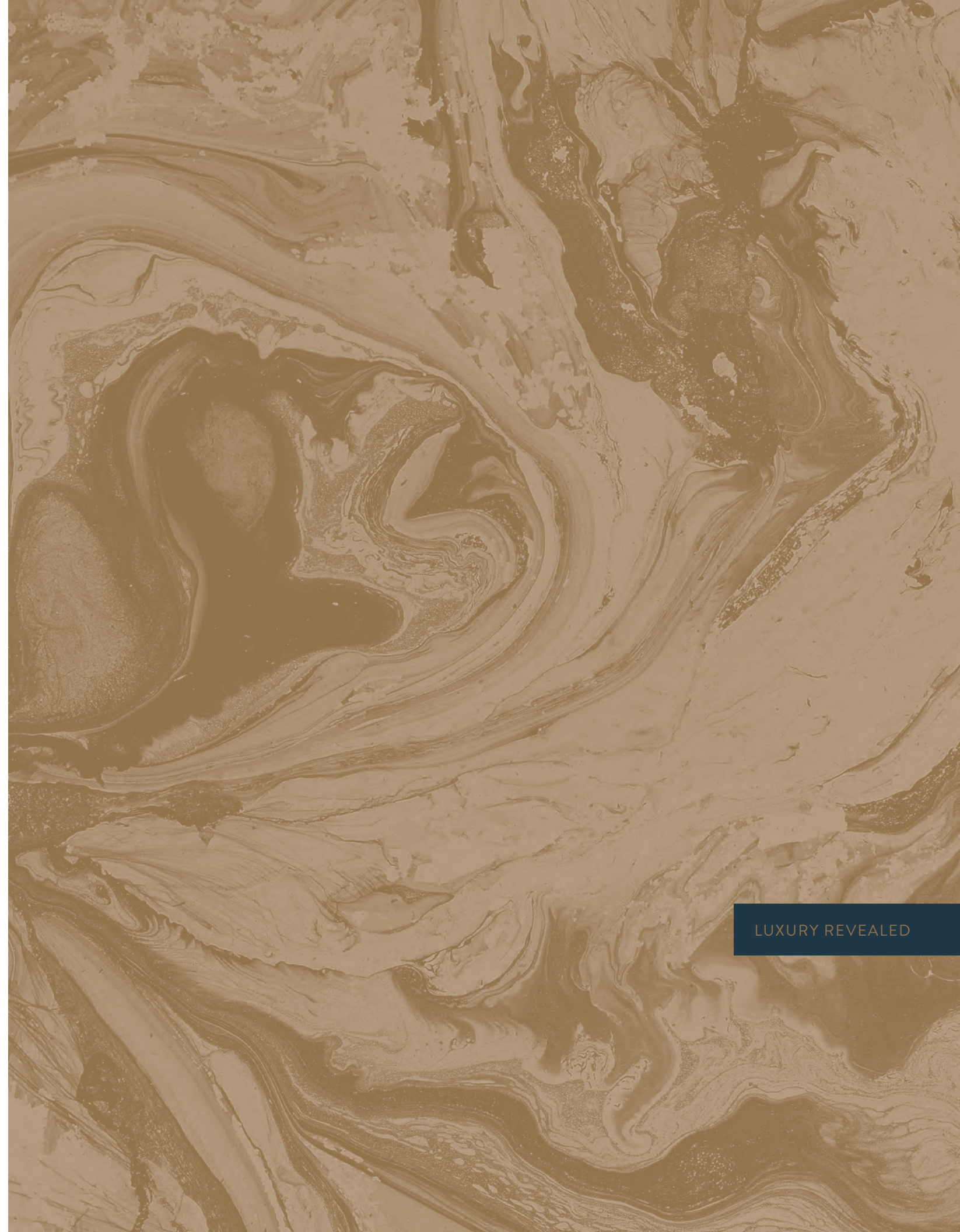


strand 0516V in wool 16115 installed herringbone
18x36 | 45.7cm x 91.4cm LVT

emerge tile CT25835



SACRED GEOMETRY



LUXURY REVEALED



MIX
Paper from
responsible sources
FSC® C003689

shaw hospitality group

shawhospitalitygroup.com • 888-448-7878 • @shawhospitality