



THE STUDIO /

design is expression / painting

FBFA
FARMBOY FINE ARTS

+ **shaw** hospitality group[®]

THE STUDIO /

design is expression / painting

FBFA + shaw hospitality group™
FARMBOY FINE ARTS

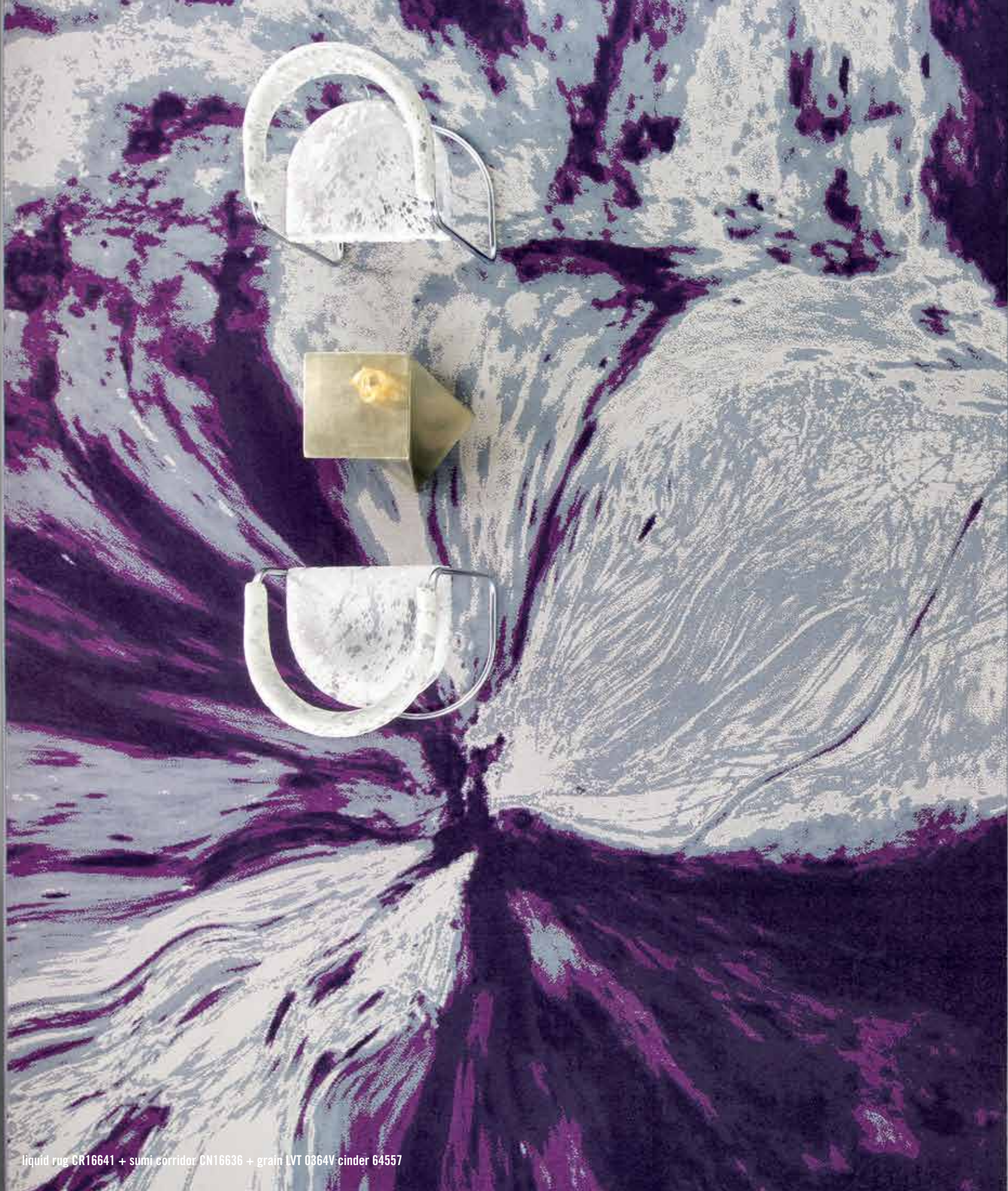
WELCOME TO THE STUDIO

An artist can spend a lifetime mastering a single work. The Studio / Painting explores this process while juxtaposing control with spontaneity.

When paint meets canvas, does it hold strong or separate to create something new?

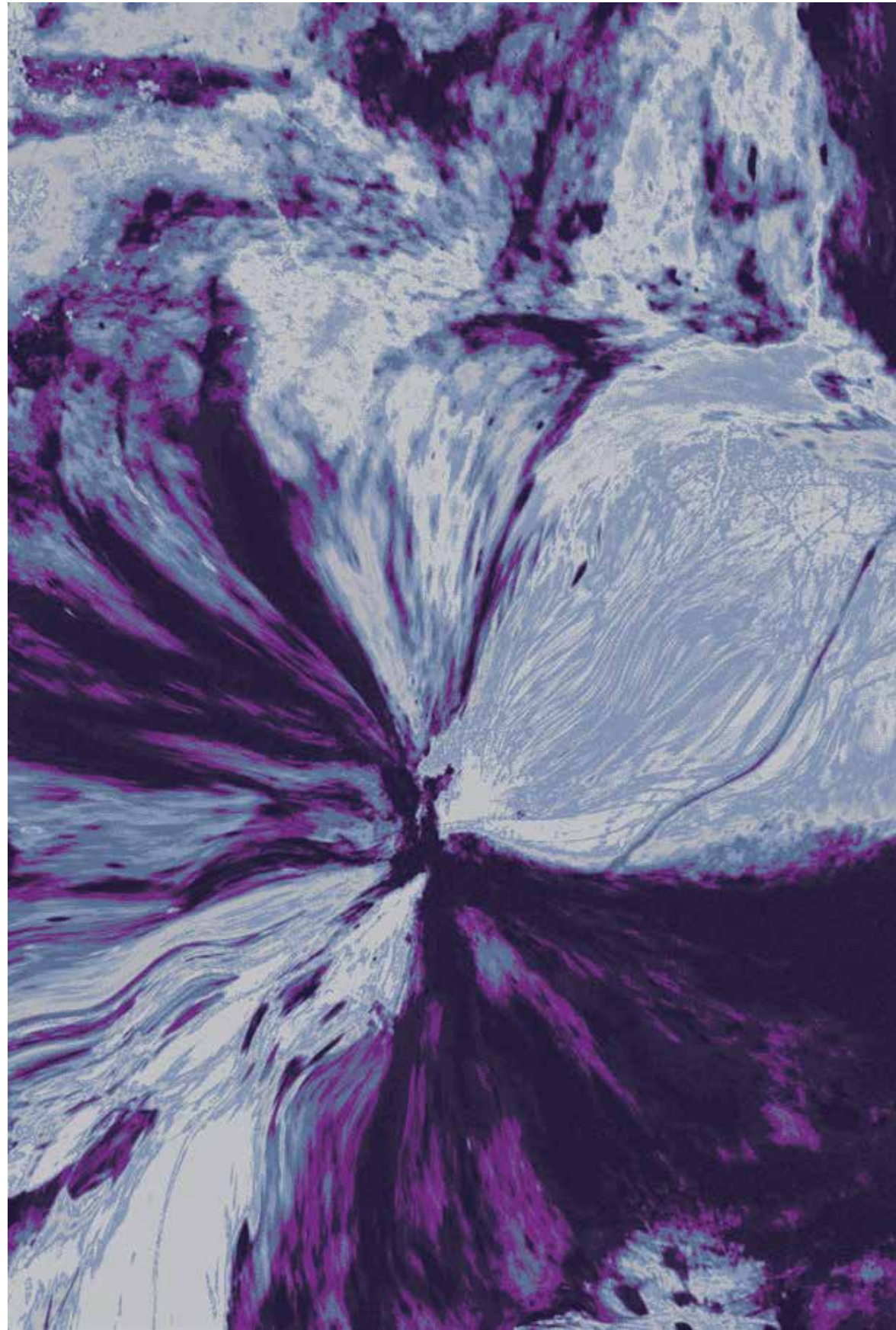
The Studio / Painting reflects this process through paints' liquidity, its variable viscosity and the artist's sense of detail. Beauty and movement are in the eye of the beholder—and the hand of the artist. Create. Connect. Inspire.

DESIGN IS EXPRESSION



LIQUID RUG

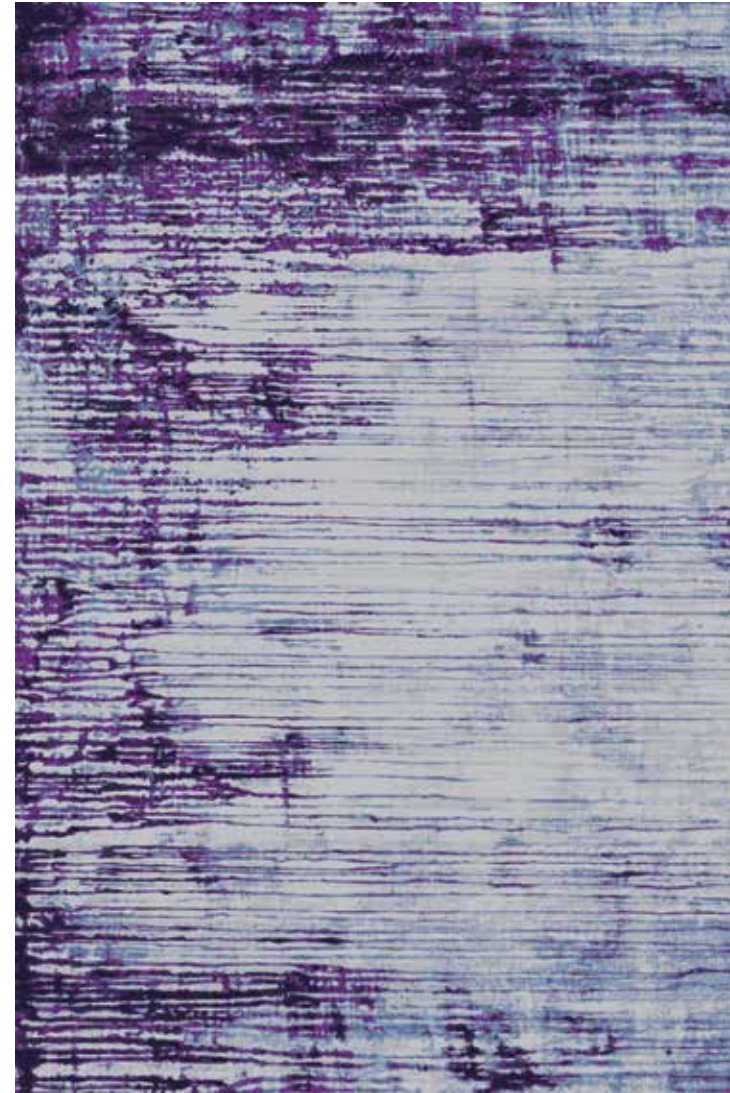
CR16641 | RUG | SIZE: 12'W x 17' 10.4"L | 3.66 m x 5.44 m



| A | B | C | D |
|-------|-------|-------|-------|
| 5604D | 2-375 | 5424D | 5429D |
| cut | cut | cut | cut |
| loop | loop | loop | loop |

SUMI RUG

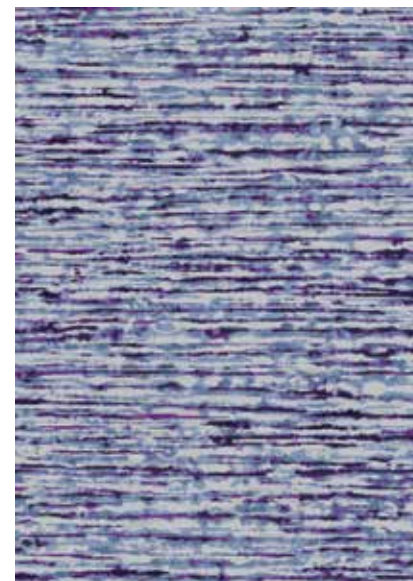
CR16657 | RUG | SIZE: 12'W x 17' 10.4"L | 3.66 m x 5.44 m



| A | B | C | D |
|-------|-------|-------|-------|
| 5604D | 2-375 | 5424D | 5429D |
| cut | cut | cut | cut |
| loop | | loop | loop |

INK WASH

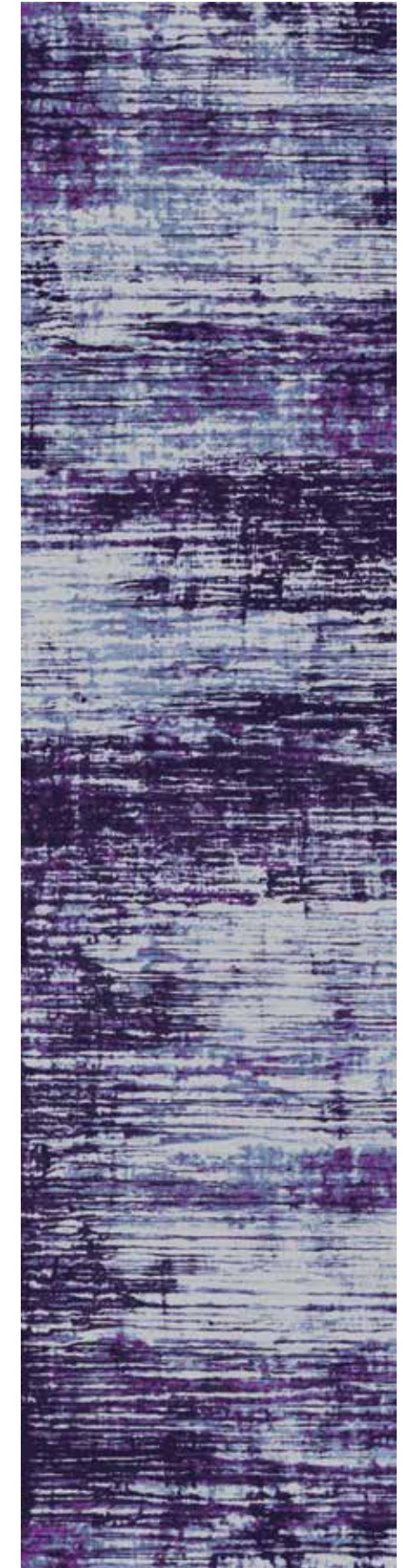
CF16652 | FIELD | REPEAT: 48"W x 67.2"L | 1.22 m x 1.71 m



| A | B | C | D |
|-------|-------|-------|-------|
| 5604D | 2-375 | 5424D | 5429D |
| cut | cut | cut | cut |
| loop | | loop | loop |

SUMI CORRIDOR

CN16636 | CORRIDOR | REPEAT: 6'W x 25' 0.8"L | 1.83 m x 7.64 m



| A | B | C | D |
|-------|-------|-------|-------|
| 5604D | 2-375 | 5424D | 5429D |
| cut | cut | cut | cut |
| loop | loop | loop | loop |



pour corridor CN16645

FLOW RUG

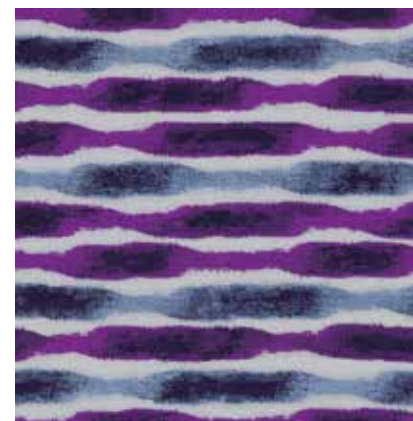
CR16655 | RUG | SIZE: 12'W x 17' 10.4"L | 3.66 m x 5.44 m



| A | B | C | D |
|-------|-------|-------|-------|
| 5604D | 2-375 | 5424D | 5429D |
| cut | cut | cut | cut |
| loop | loop | loop | loop |

MOVEMENT

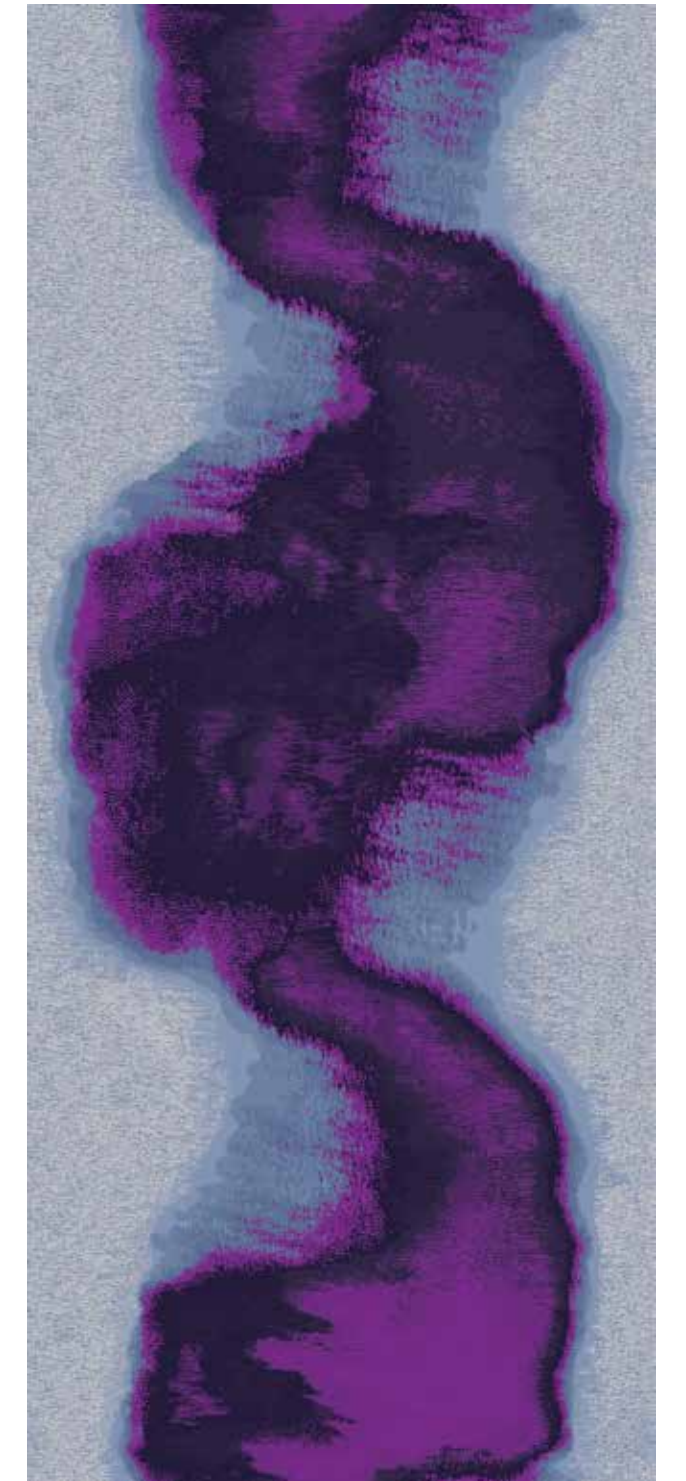
CF16650 | FIELD | REPEAT: 48"W x 48"L | 1.22 m x 1.22 m



| A | B | C | D |
|-------|-------|-------|-------|
| 5604D | 2-375 | 5424D | 5429D |
| cut | cut | cut | cut |
| loop | loop | loop | loop |

POUR CORRIDOR

CN16645 | CORRIDOR | REPEAT: 6'W x 14' 1.6"L | 1.83 m x 4.31 m



| A | B | C | D |
|-------|-------|-------|-------|
| 5604D | 2-375 | 5424D | 5429D |
| cut | cut | cut | cut |
| loop | loop | loop | loop |

GESTURE RUG

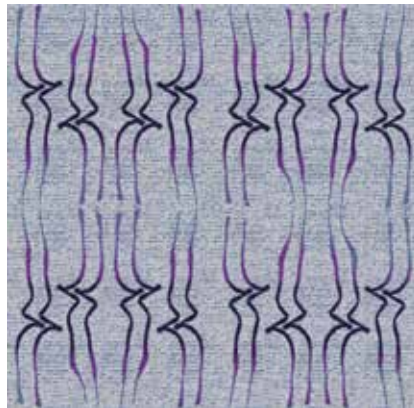
CR16639 | RUG | SIZE: 12'W x 17' 10.4"L | 3.66 m x 5.44 m



| A | B | C | D |
|-------|-------|-------|-------|
| 5604D | 2-375 | 5424D | 5429D |
| cut | loop | cut | cut |
| loop | | loop | loop |

TILT

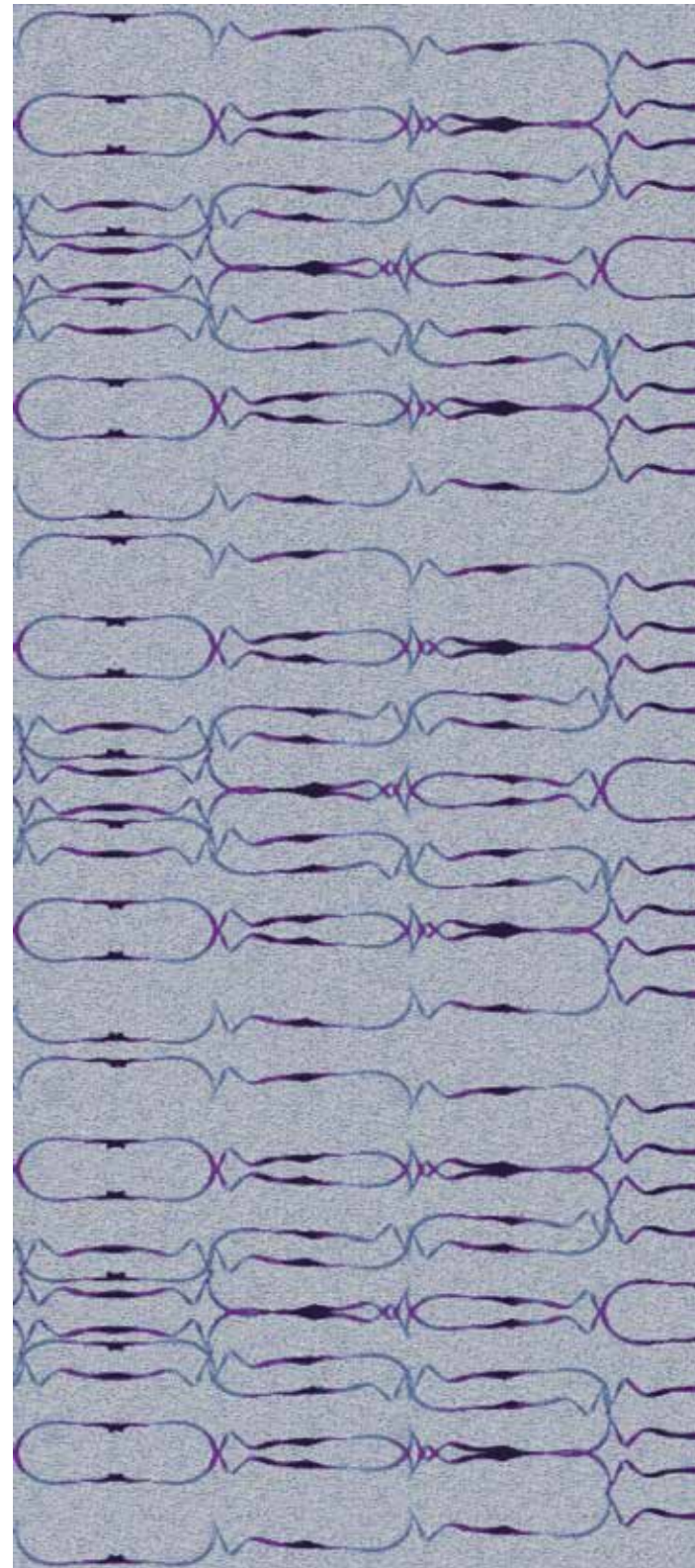
CF16649 | FIELD | REPEAT: 36"W x 35.2"L | 91.44 cm x 89.4 cm



| A | B | C | D |
|-------|-------|-------|-------|
| 5604D | 2-375 | 5424D | 5429D |
| cut | cut | cut | cut |
| loop | loop | loop | loop |

TILT CORRIDOR

CN16644 | CORRIDOR | REPEAT: 6'W x 13' 7.2"L | 1.83 m x 4.14 m



| A | B | C | D |
|-------|-------|-------|-------|
| 5604D | 2-375 | 5424D | 5429D |
| cut | cut | cut | cut |
| loop | | loop | loop |



tilt CF16649

ANNULAR RUG

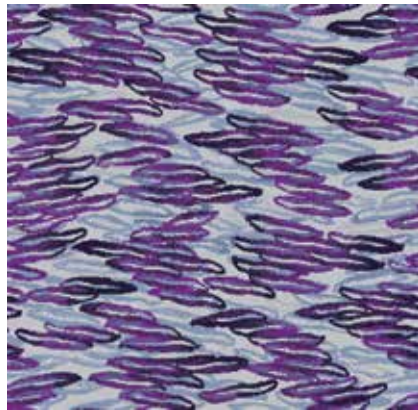
CR16656 | RUG | SIZE: 12'W x 17' 10.4"L | 3.66 m x 5.44 m



| A | B | C | D |
|-------|-------|-------|-------|
| 5604D | 2-375 | 5424D | 5429D |
| cut | cut | cut | cut |
| loop | loop | loop | loop |

ANNULAR

CF16648 | FIELD | REPEAT: 36"W x 35.2"L | 91.44 cm x 89.4 cm



| A | B | C | D |
|-------|-------|-------|-------|
| 5604D | 2-375 | 5424D | 5429D |
| cut | cut | cut | cut |
| loop | loop | loop | loop |

ANNULAR CORRIDOR

CN16643 | CORRIDOR | REPEAT: 6'W x 15' 8.8"L | 1.83 m x 4.79 m



| A | B | C | D |
|-------|-------|-------|-------|
| 5604D | 2-375 | 5424D | 5429D |
| cut | cut | cut | cut |
| loop | loop | loop | loop |

PALETTE KNIFE RUG

CR16658 | RUG | SIZE: 12'W x 17' 10.4"L | 3.66 m x 5.44 m



| A | B | C | D |
|-------|-------|-------|-------|
| 5604D | 2-375 | 5424D | 5429D |
| cut | cut | cut | cut |
| loop | loop | loop | loop |

Paint pools on canvas.

The artist runs a brush
through just before it's dry,
creating depth and gradation.

And a beautiful carpet
for your corridor.



BLEND RUG

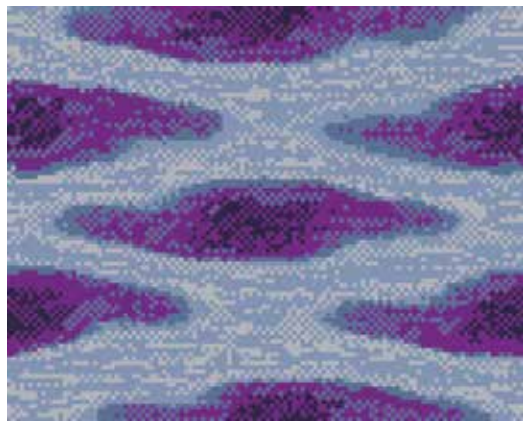
CR16660 | RUG | SIZE: 12'W x 17' 10.4"L | 3.66 m x 5.44 m



| A | B | C | D |
|-------|-------|-------|-------|
| 5604D | 2-375 | 5424D | 5429D |
| cut | cut | cut | cut |
| loop | loop | loop | loop |

POOL

CF16677 | FIELD | REPEAT: 12"W x 9.6"L | 30.48 cm x 24.38 cm



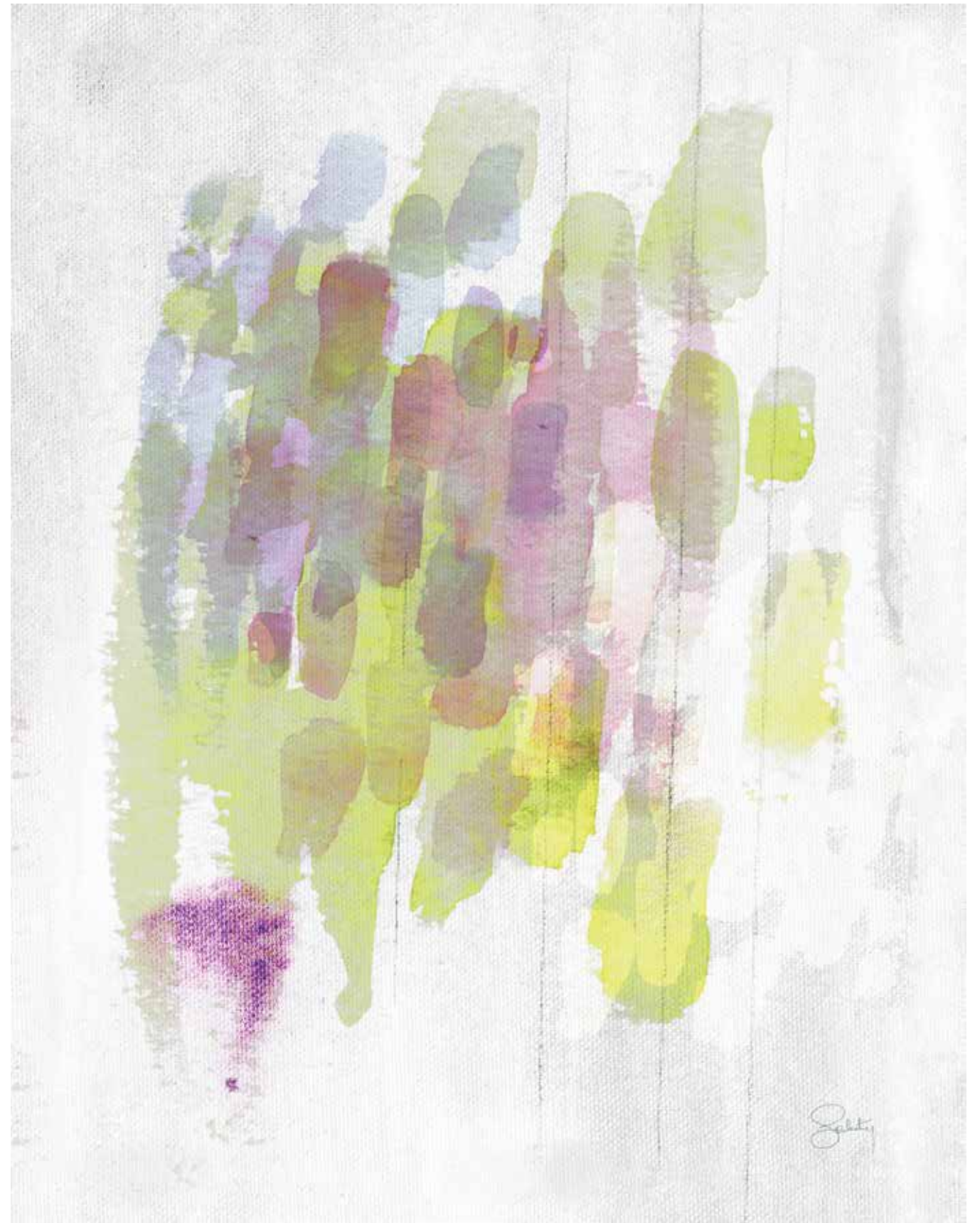
| A | B | C | D |
|-------|-------|-------|-------|
| 5604D | 2-375 | 5424D | 5429D |
| loop | cut | cut | cut |
| | loop | loop | |

SMUDGE CORRIDOR

CN16637 | CORRIDOR | REPEAT: 6'W x 12' 9.6"L | 1.83 m x 3.9 m



| A | B | C | D |
|-------|-------|-------|-------|
| 5604D | 2-375 | 5424D | 5429D |
| cut | cut | cut | cut |
| loop | loop | loop | loop |



Express degrees of control and spontaneity.



BRUSH MARK RUG

CR16659 | RUG | SIZE: 12'W x 17' 10.4"L | 3.66 m x 5.44 m



| A | B | C | D |
|-------|-------|-------|-------|
| 5604D | 2-375 | 5424D | 5429D |
| cut | cut | cut | cut |
| loop | loop | loop | loop |

DRY BRUSH CORRIDOR

CN16638 | CORRIDOR | REPEAT: 6'W x 14' 11.2"L | 1.83 m x 4.55 m



| A | B | C | D |
|-------|-------|-------|-------|
| 5604D | 2-375 | 5424D | 5429D |
| cut | cut | cut | cut |
| loop | loop | loop | loop |

brush mark rug CR16659

IMPASTO CORRIDOR

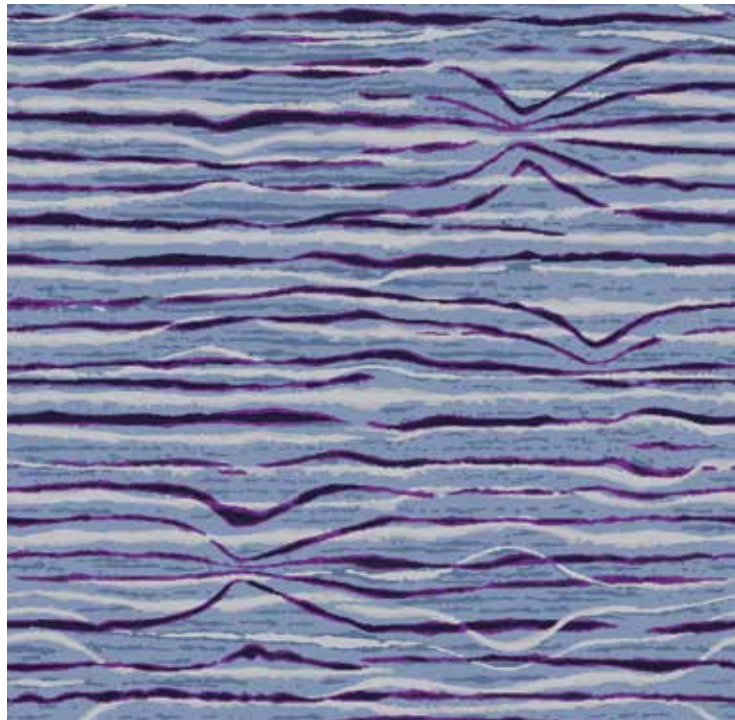
CN16640 | CORRIDOR | REPEAT: 6'W x 16'L | 1.83 m x 4.88 m



| A | B | C | D |
|-------|-------|-------|-------|
| 5604D | 2-375 | 5424D | 5429D |
| cut | cut | cut | cut |
| loop | loop | loop | loop |

VISCOSITY

CF16647 | FIELD | REPEAT: 6'W x 6' 1.6"L | 1.83 m x 1.87 m



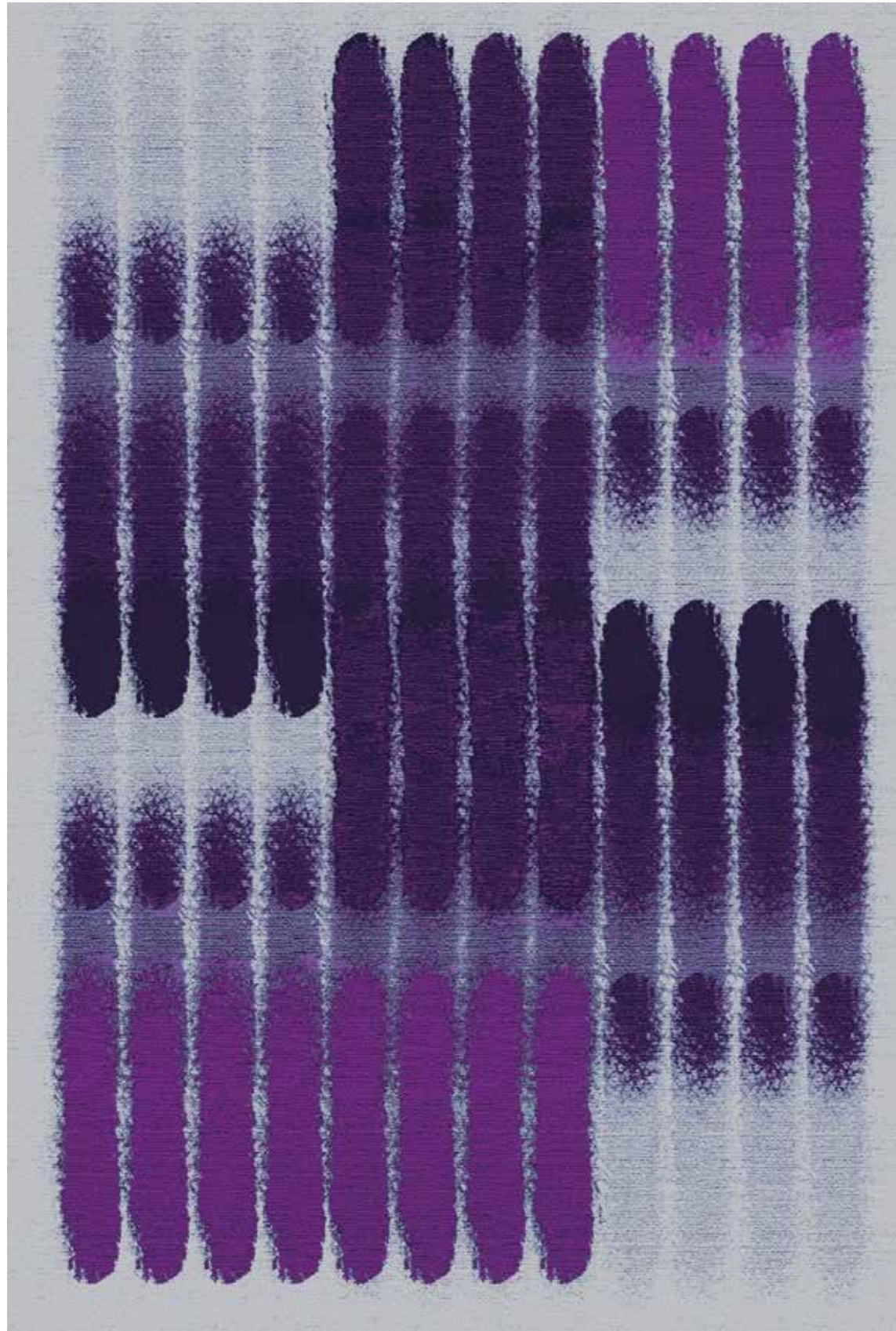
| A | B | C | D |
|-------|-------|-------|-------|
| 5604D | 2-375 | 5424D | 5429D |
| cut | cut | cut | cut |
| loop | loop | loop | loop |



impasto corridor CN16640

FRESCO SECCO RUG

CR16654 | RUG | SIZE: 12'W x 17' 10.4"L | 3.66 m x 5.44 m



| A | B | C | D |
|-------|-------|-------|-------|
| 5604D | 2-375 | 5424D | 5429D |
| cut | cut | cut | cut |
| loop | loop | loop | loop |

BRISTLE CORRIDOR

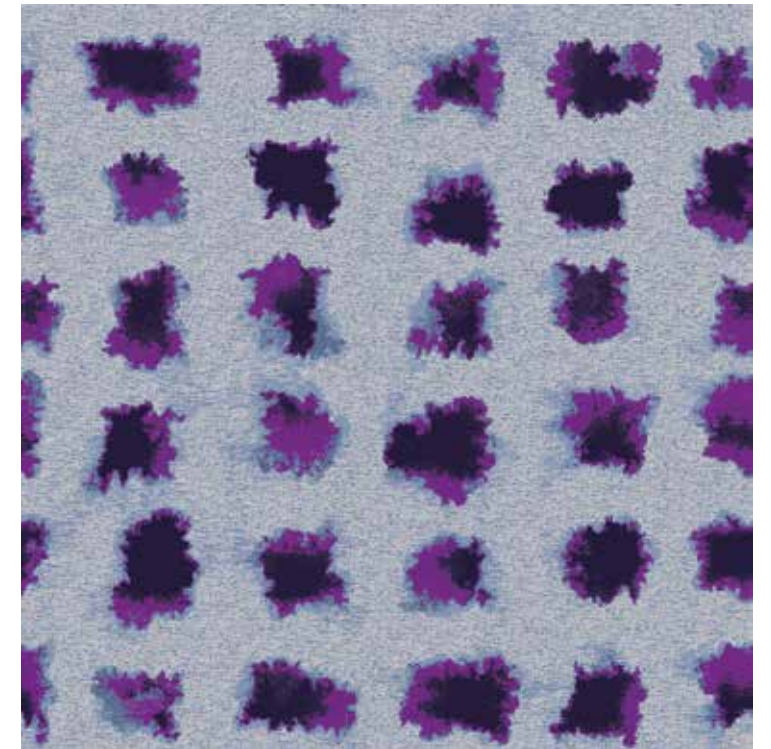
CN16646 | CORRIDOR | REPEAT: 6'W x 18' 1.6"L | 1.83 m x 5.53 m



| A | B | C | D |
|-------|-------|-------|-------|
| 5604D | 2-375 | 5424D | 5429D |
| cut | cut | cut | cut |
| loop | loop | loop | loop |

DAUB

CF16651 | FIELD | REPEAT: 6'W x 6' 1.6"L | 1.83 m x 1.87 m



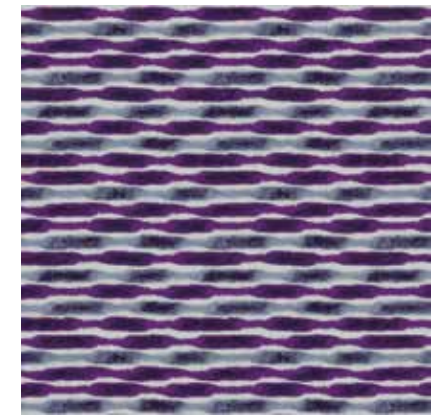
| A | B | C | D |
|-------|-------|-------|-------|
| 5604D | 2-375 | 5424D | 5429D |
| cut | cut | cut | cut |
| loop | loop | loop | loop |

WHAT HAPPENS WHEN PAINT MEETS CANVAS?

Liquid meets friction. Colors collide.
Patterns connect and divide.
The Studio / Painting collection flows
from room to room,
from inside to outside.



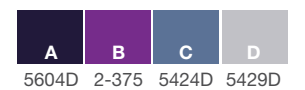
POOL CF16677



MOVEMENT CF16650



PALETTE KNIFE RUG CR16658



LIQUID EXPRESSION

Create a new sense of movement and rhythm.

Communicate your vision with custom carpet tile and broadloom, color and shape.

Become your own artist and coordinate your space with

custom layouts from the collection.

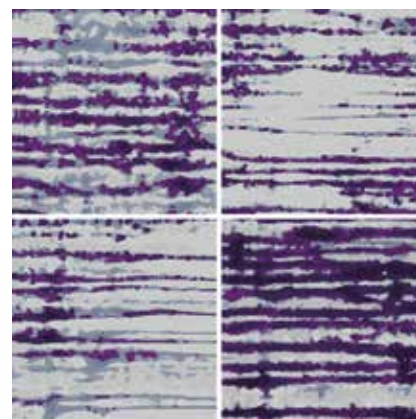
See more from this collection at shawhospitalitygroup.com.



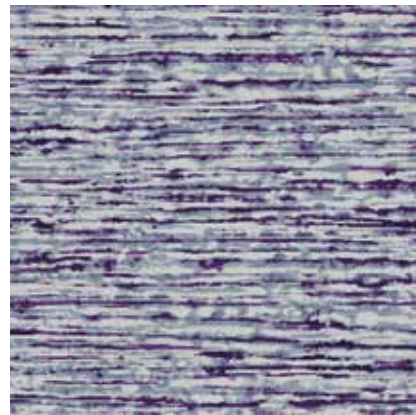
FLOW RUG CR16655



DRY BRUSH CORRIDOR CN16638



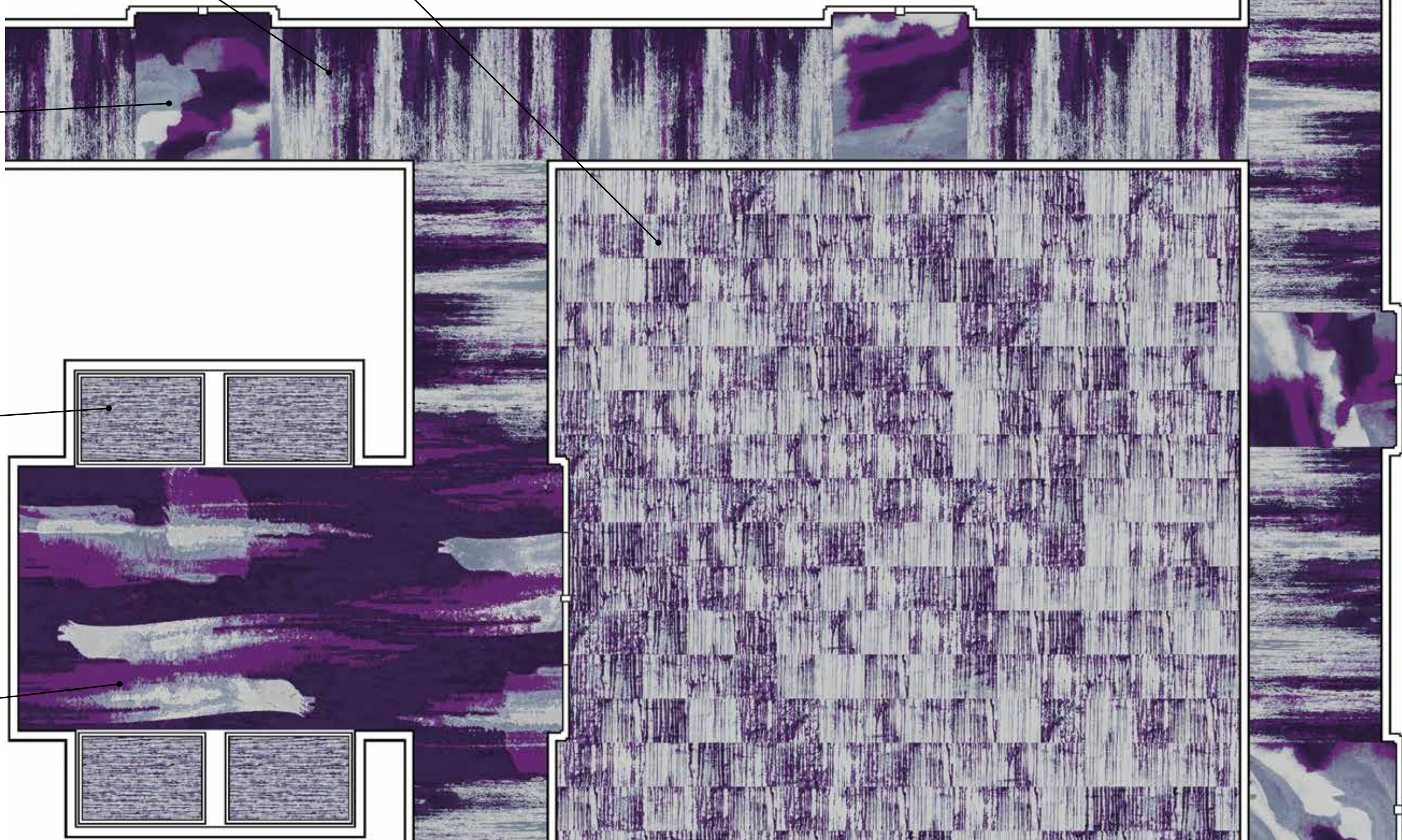
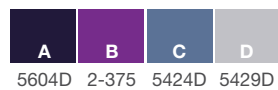
SUMI TILE CT16865



INK WASH CF16652



BRUSH MARK RUG CR16659



WHAT WILL YOU CREATE?

In your hands, carpet tile can transform a space with your own vision of control and spontaneity. Flexible installation methods add to the creative possibilities.

Go monolithic for a seamless transformation.

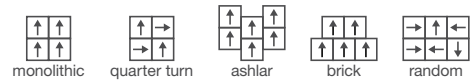
Shift perspective with brick and ashlar.

Create engaging depth with quarter turn.

Explore the boundaries of design with random installation.

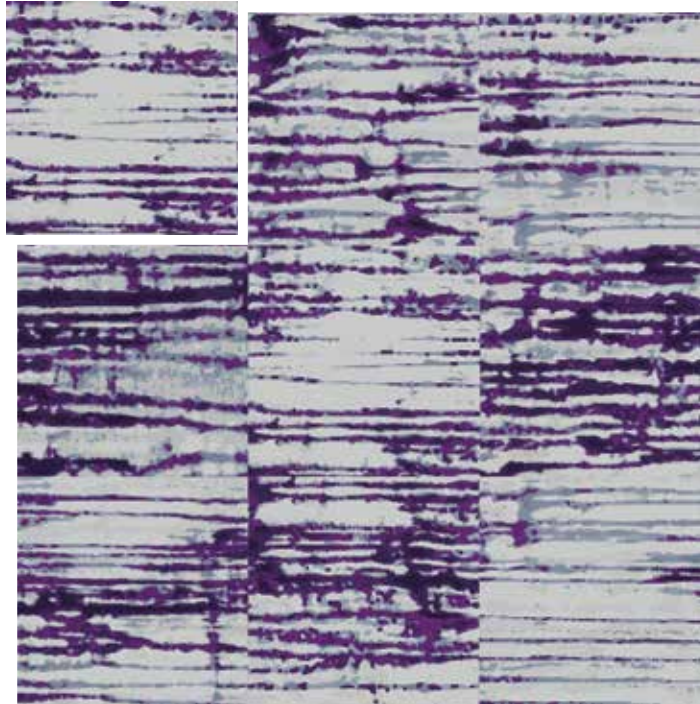
Be the artist and the beholder.

recommended installation methods



SUMI TILE

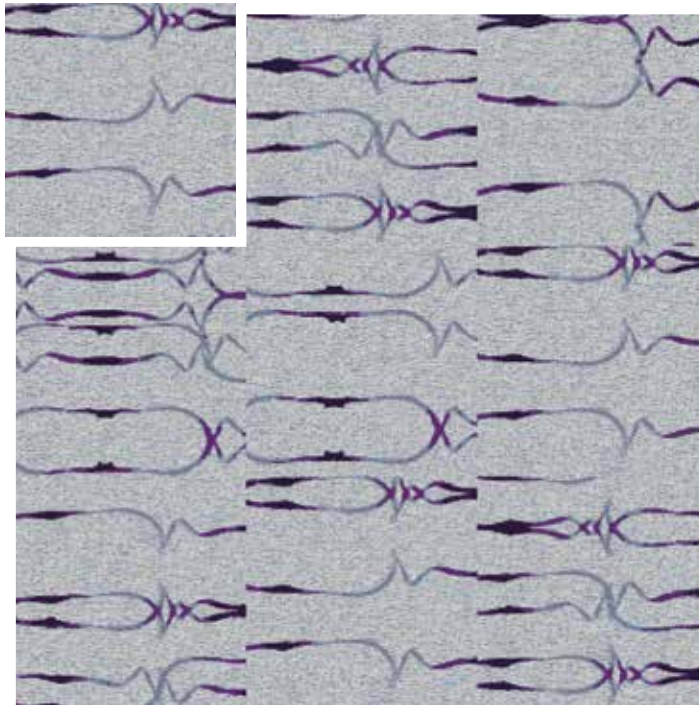
CT16865 | TILE | SIZE: 24 X 24 in. | 61 X 61 cm | monolithic shown in 9 tile grid



| A | B | C | D |
|-------|-------|-------|-------|
| 5604D | 2-375 | 5424D | 5429D |
| cut | cut | cut | cut |
| loop | | loop | loop |

TILT TILE

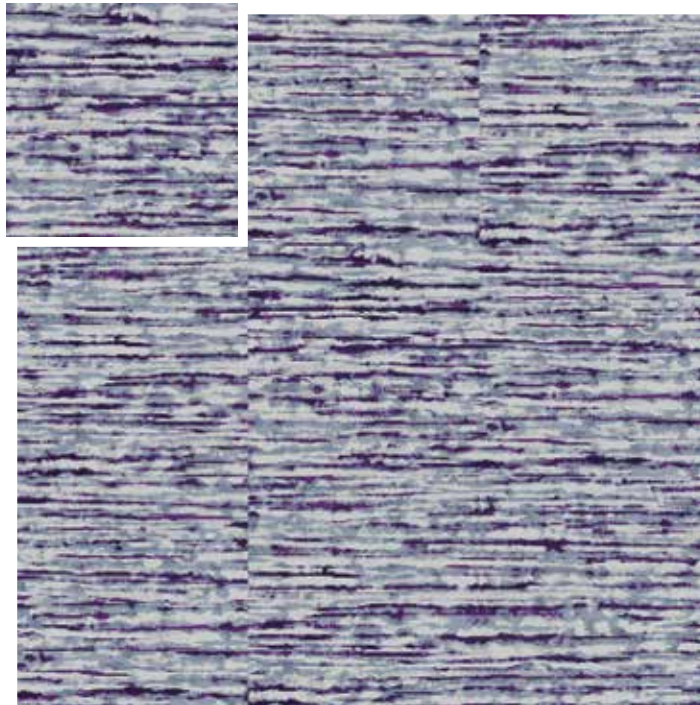
CT16870 | TILE | SIZE: 24 X 24 in. | 61 X 61 cm | monolithic shown in 9 tile grid



| A | B | C | D |
|-------|-------|-------|-------|
| 5604D | 2-375 | 5424D | 5429D |
| cut | cut | cut | cut |
| | | loop | loop |

INK WASH TILE

CT16871 | TILE | SIZE: 24 X 24 in. | 61 X 61 cm | monolithic shown in 9 tile grid



| A | B | C | D |
|-------|-------|-------|-------|
| 5604D | 2-375 | 5424D | 5429D |
| cut | cut | cut | cut |
| loop | | loop | loop |



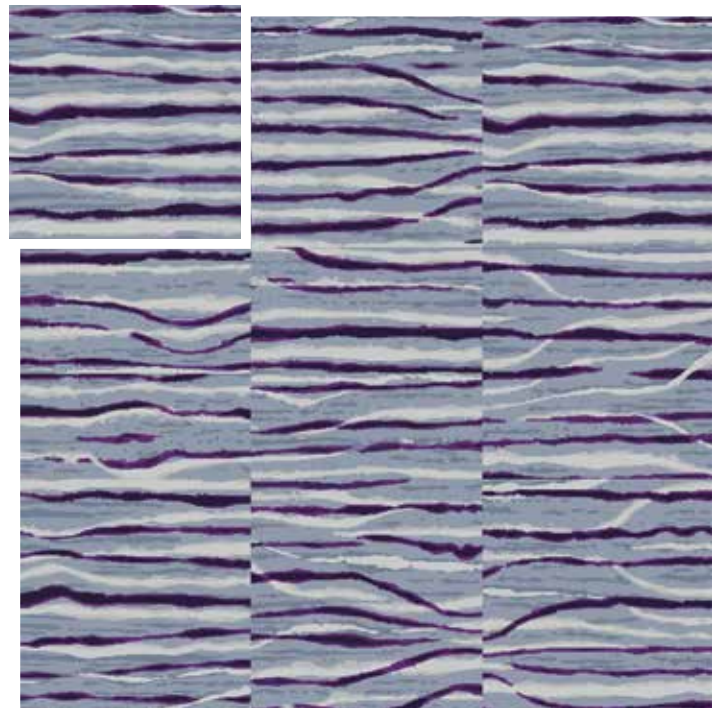
ink wash tile CT16871 + tilt tile CT16870



dry brush tile CT16868

VISCOSITY TILE

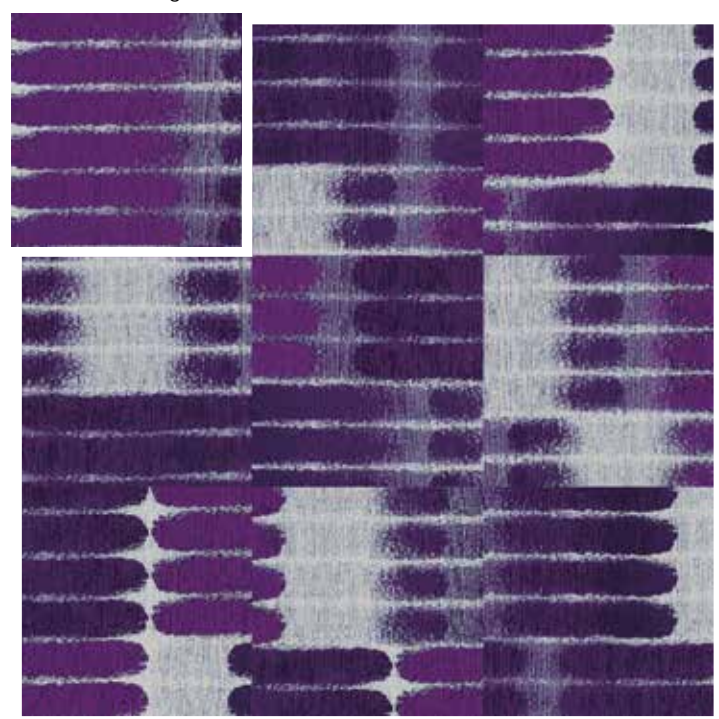
CT16866 | TILE | SIZE: 24 X 24 in. | 61 X 61 cm | monolithic shown in 9 tile grid



| A | B | C | D |
|-------|-------|-------|-------|
| 5604D | 2-375 | 5424D | 5429D |
| cut | cut | cut | cut |
| loop | loop | loop | loop |

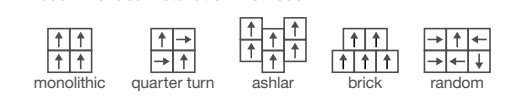
FRESCO SECCO TILE

CT16872 | TILE | SIZE: 24 X 24 in. | 61 X 61 cm | monolithic shown in 9 tile grid



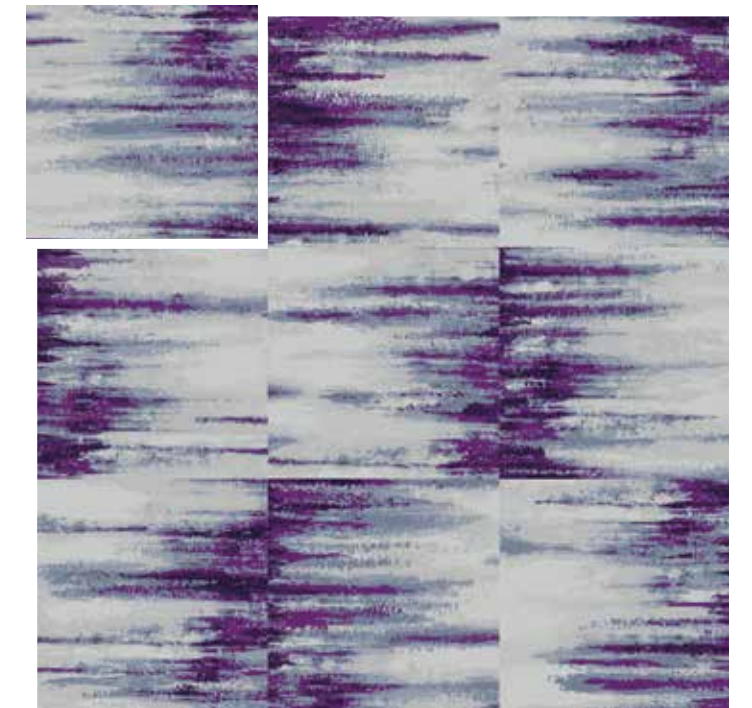
| A | B | C | D |
|-------|-------|-------|-------|
| 5604D | 2-375 | 5424D | 5429D |
| cut | cut | cut | cut |
| loop | loop | loop | loop |

recommended installation methods



DRY BRUSH TILE

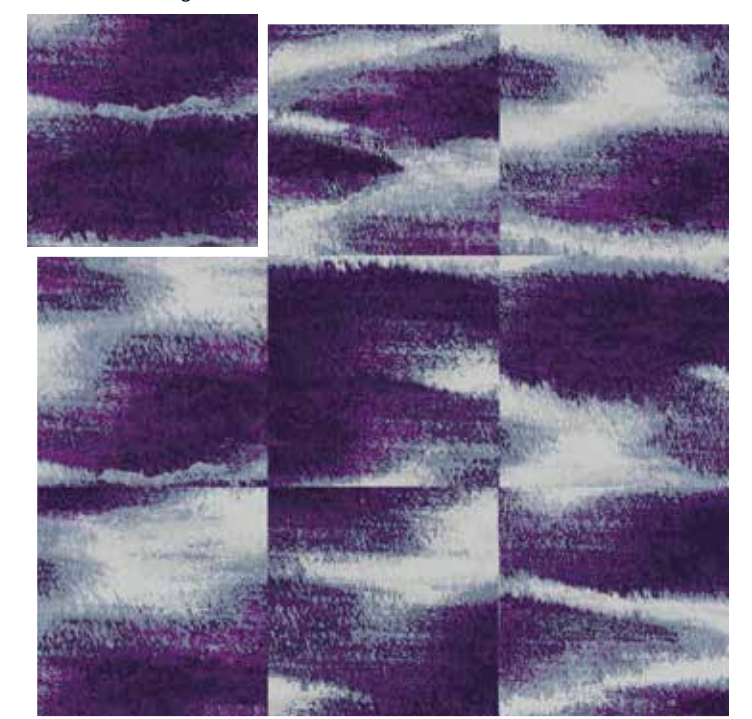
CT16868 | TILE | SIZE: 24 X 24 in. | 61 X 61 cm | monolithic shown in 9 tile grid



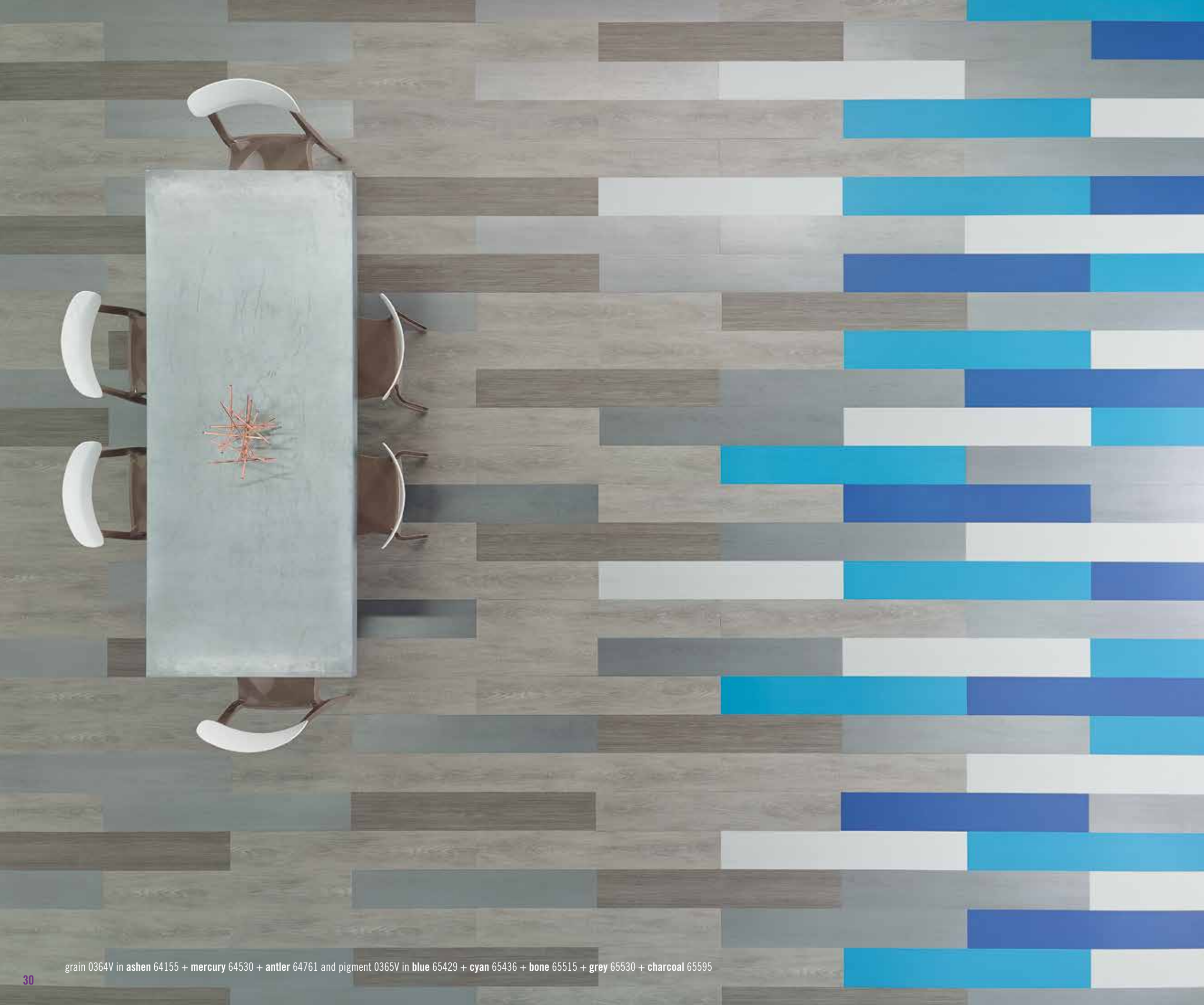
| A | B | C | D |
|-------|-------|-------|-------|
| 5604D | 2-375 | 5424D | 5429D |
| cut | cut | cut | cut |
| loop | loop | loop | loop |

SMUDGE TILE

CT16869 | TILE | SIZE: 24 X 24 in. | 61 X 61 cm | monolithic shown in 9 tile grid



| A | B | C | D |
|-------|-------|-------|-------|
| 5604D | 2-375 | 5424D | 5429D |
| cut | cut | cut | cut |
| loop | loop | loop | loop |



GRAIN + PIGMENT

Natural wood tones, metallic sheen, colors from warm to cool to bright. Modern wood-grain textures mix with the subtle striations of near-solids in Grain + Pigment, a luxury plank collection. Available in two formats: a direct glue resilient plank and our patented In*Step glue-less locking system, Grain + Pigment is designed to enhance and endure in any environment. Texture and tone, plank by plank. Design is contrast.



pigment 0365V in **bone** 65515 + **grey** 65530 + **charcoal** 65595

GRAIN

| | |
|---|---|
|  |  |
| alabaster 64114 | parchment 64111 |
|  |  |
| alloy* 64515 | bare 64200 |
|  |  |
| ashen 64155 | buff 64140 |
|  |  |
| glow* 64105 | honey 64240 |
|  |  |
| antler 64761 | cocoa 64103 |
|  |  |
| mercury* 64530 | bark 64720 |
|  |  |
| weathered 64518 | ginger 64820 |
|  |  |
| fog 64327 | nutshell 64150 |
|  |  |
| cinder* 64557 | earthen 64710 |
|  |  |
| char 64549 | clove 64740 |
|  |  |
| russet 64760 | chickory 64752 <i>*metallic</i> |

PIGMENT

| | |
|---|---|
|  |  |
| bone 65515 | beige 65114 |
|  |  |
| grey 65530 | stone 65115 |
|  |  |
| charcoal 65595 | taupe 65761 |
|  |  |
| green 65326 | yellow 65201 |
|  |  |
| cyan 65436 | orange 65675 |
|  |  |
| blue 65429 | red 65885 |

START
FAIRLY
OVER.